

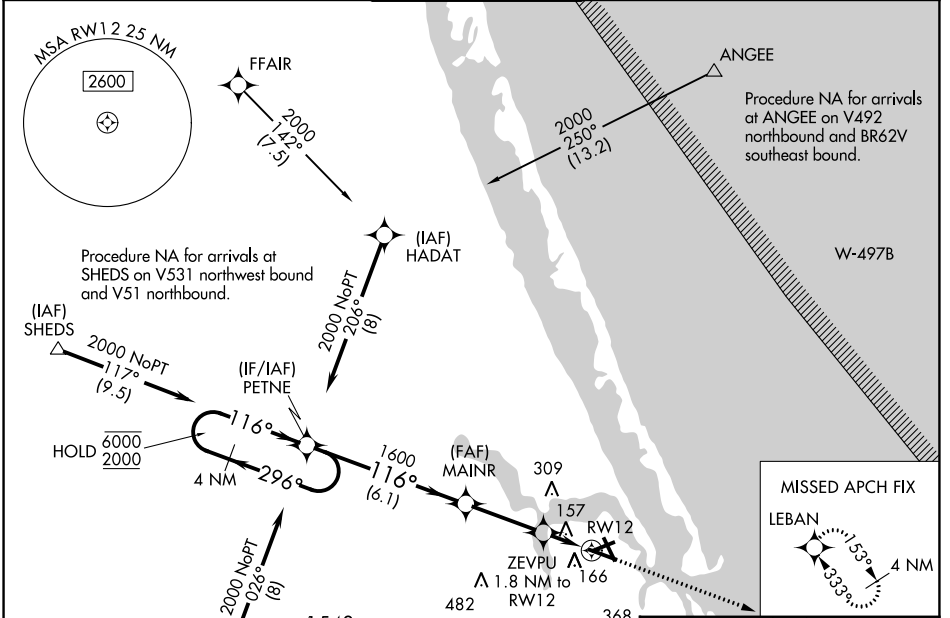
WAAS CH <b>70516</b> <b>W12A</b>	APP CRS <b>116°</b>	Rwy Idg <b>5368</b> TDZE <b>16</b> Apt Elev <b>16</b>
--	------------------------	---

# RNAV (GPS) RWY 12

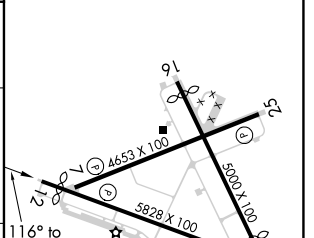
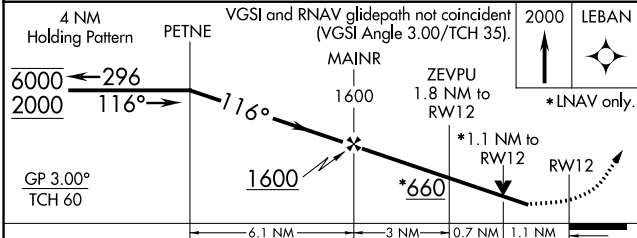
WITHAM FLD (SUA)

RNP APCH.		MISSED APPROACH: Climb to 2000 direct LEBAN and hold.		
<p>▼ Circling Rwy 7, 16, 25, 30, 34 NA at night. Rwy 12 helicopter visibility reduction below ¼ SM NA. For uncompensated Baro-VNAV systems, LNAV/VNAV NA below -1.5°C or above 54°C.</p>				

ATIS <b>134.475</b>	PALM BEACH APP CON <b>132.8</b>	STUART TOWER ★ <b>126.6 (CTAF) 0</b>	GND CON <b>121.7</b>	CLNC DEL <b>121.025</b>
------------------------	------------------------------------	---	-------------------------	----------------------------



ELEV 16	TDZE 16
---------	---------



CATEGORY	A	B	C	D
LPV DA		268-¾	252 (300-¾)	
LNAV/VNAV DA		466-1⅜	450 (500-1⅜)	
LNAV MDA	420-1	404 (500-1)	420-1⅛	404 (500-1⅛)
CIRCLING	480-1	464 (500-1)	680-1¼ 664 (700-1¼)	680-2 664 (700-2)

REIL Rwy 12-30 0	MIRL Rwy 12-30 and 7-25 0
------------------	---------------------------

SE-3, 05 SEP 2024 to 03 OCT 2024

SE-3, 05 SEP 2024 to 03 OCT 2024