

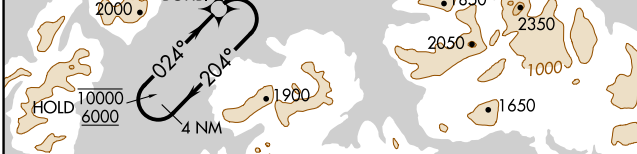
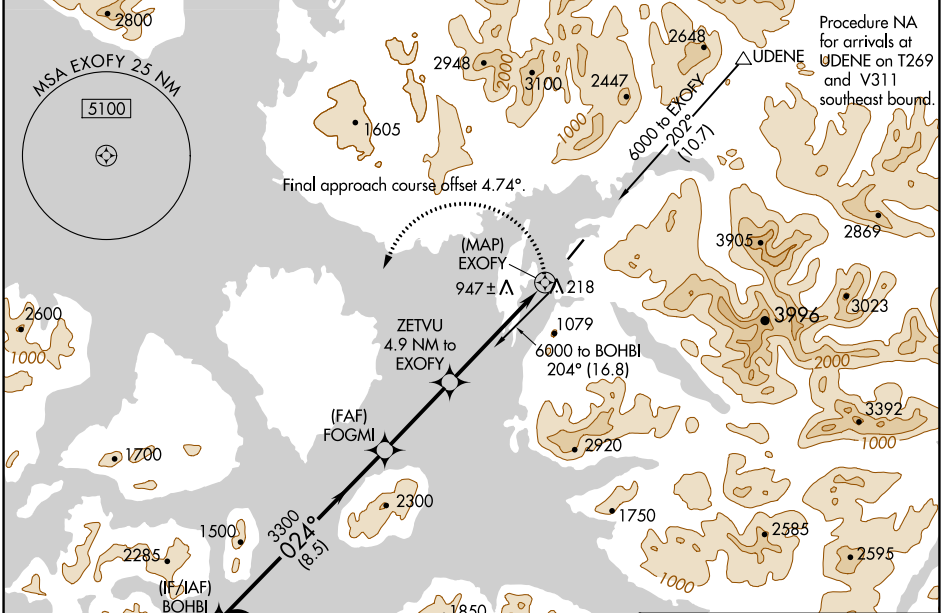
APP CRS	Rwy Idg	5000
024°	TDZE	57
	Apt Elev	80

RNAV (GPS) Y RWY 2

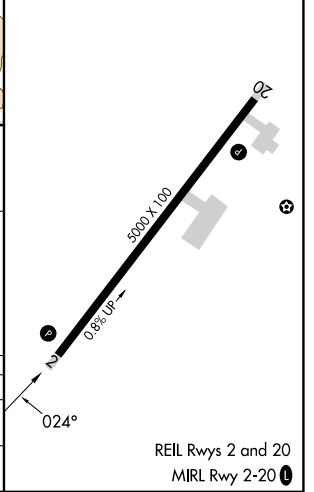
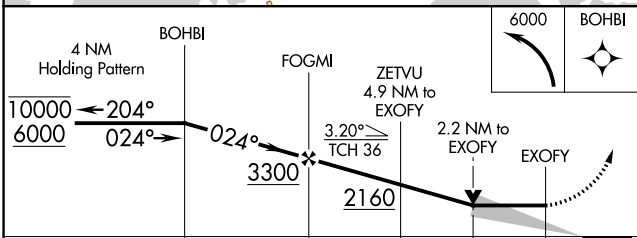
KLAWOCK (AKW) (PAKW)

RNP APCH-GPS.		MISSED APPROACH: (Do not exceed 165K until BOHBI) Climbing left turn to 6000 direct BOHBI and hold, continue climb-in-hold to 6000.
	Circling NA east of Rwy 2-20. Circling Rwy 20 NA at night. -9°C	

ASOS 135.45	ANCHORAGE CENTER 118.5 284.6	KETCHIKAN RADIO 122.25	CTAF 120.9
-----------------------	--	----------------------------------	----------------------



ELEV 80	TDZE 57
---------	---------



CATEGORY	A	B	C	D
LNVA MDA	1160-1 $\frac{3}{8}$ 1103 (1100-1 $\frac{3}{8}$)	1160-1 $\frac{1}{2}$ 1103 (1100-1 $\frac{1}{2}$)	1160-3 1103 (1100-3)	NA
CIRCLING	1160-1 $\frac{1}{2}$	1080 (1100-1 $\frac{1}{2}$)	1300-3 1220 (1300-3)	NA

AK, 05 SEP 2024 to 31 OCT 2024

AK, 05 SEP 2024 to 31 OCT 2024