

WAAS CH 90526 W21A	APP CRS 207°	Rwy Idg TDZE 537 Apt Elev 537	5003
--	------------------------	---	-------------

RNAV (GPS) RWY 21

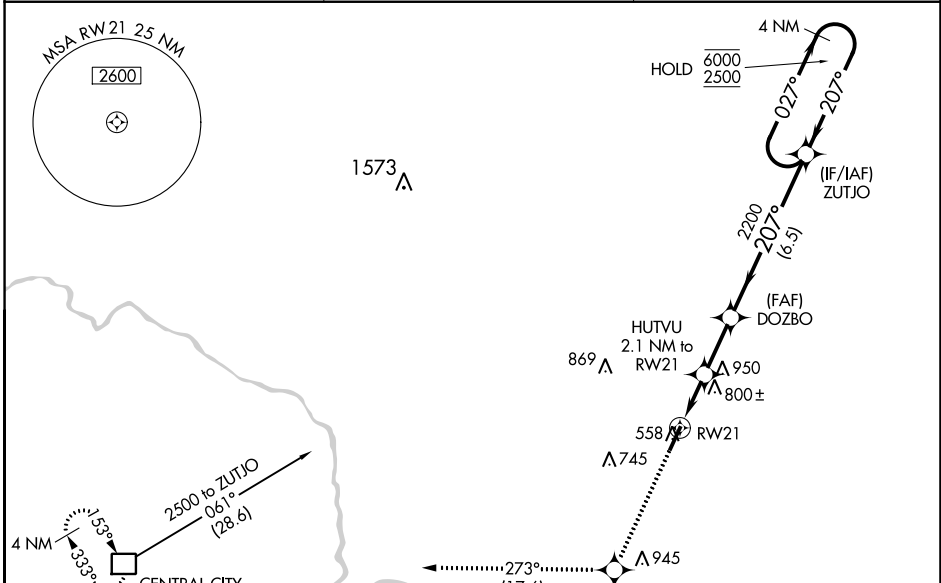
OHIO COUNTY (JQD)

RNP APCH - GPS.

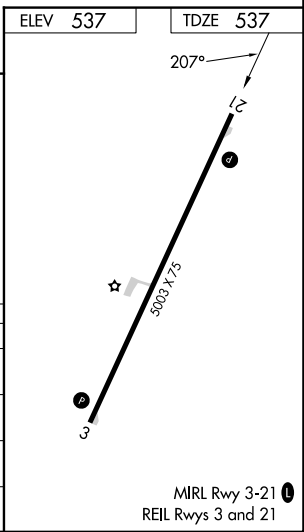
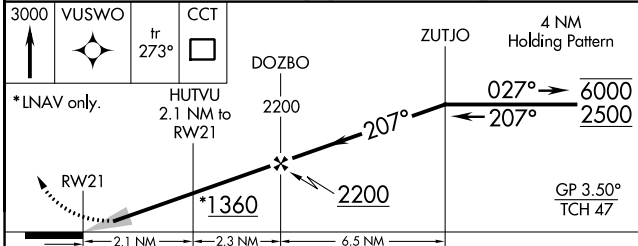
Baro-VNAV NA when using Owensboro altimeter setting. For uncompensated Baro-VNAV systems, LNAV/VNAV NA below -16°C or above 54°C. When local altimeter setting not received, use Owensboro altimeter setting and increase LPV DA to 858 feet, increase LNAV/VNAV DA to 1082 feet. Increase all MDA 80 feet, increase LNAV/VNAV visibilities all Cats ¼ SM, increase LNAV and Circling Cat C visibility ¼ SM. Rwy 21 helicopter visibility reduction below 1 SM NA. Procedure NA at night.

MISSED APPROACH: Climb to 3000 direct VUSWO and on track 273° to CCT DME and hold.

AWOS-3PT 132.1	EVANSVILLE APP CON ★ 124.025 290.9	UNICOM 122.8 (CTAF)
--------------------------	--	-------------------------------



ELEV 537	TDZE 537
-----------------	-----------------



CATEGORY	A	B	C	D
LPV DA	787-1 250 (300-1)		807-1 270 (300-1)	NA
LNAV/VNAV DA	1011-1 3/8 474 (500-1 3/8)			NA
LNAV MDA	1060-1 523 (600-1)		1060-1 1/2 523 (600-1 1/2)	NA
CIRCLING	1060-1 523 (600-1)	1100-1 563 (600-1)	1300-2 1/4 763 (800-2 1/4)	NA

SE-1, 05 SEP 2024 to 03 OCT 2024

SE-1, 05 SEP 2024 to 03 OCT 2024