

| | | | |
|--|------------------------|-----------------------------|---|
| WAAS CH 45926 W03A | APP CRS 027° | Rwy Idg TDZE Apt Elev | 5003 530 537 |
|--|------------------------|-----------------------------|---|

RNAV (GPS) RWY 3

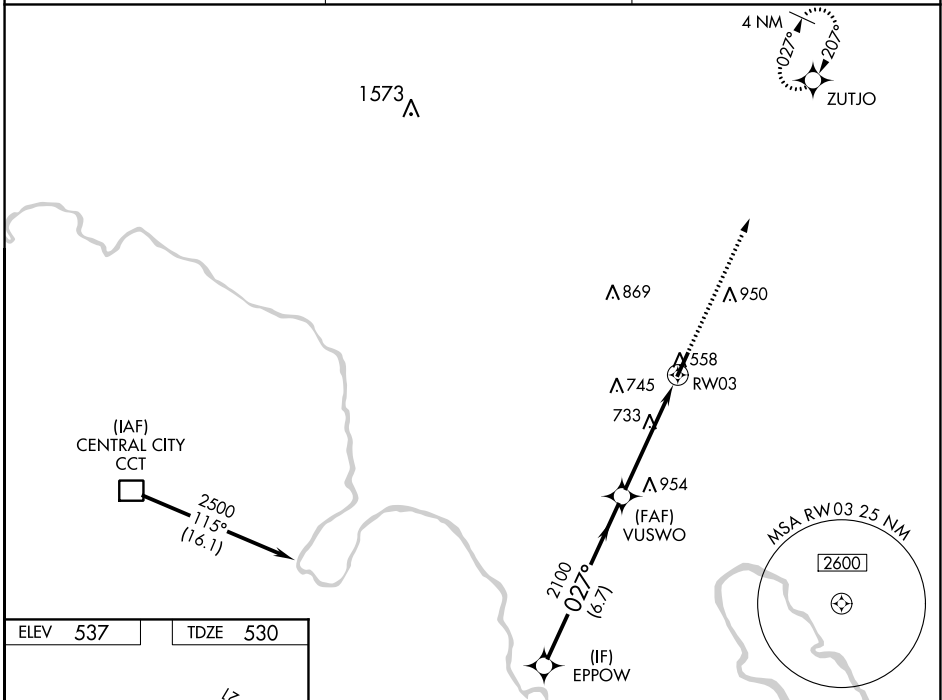
OHIO COUNTY (JQD)

RNP APCH - GPS

⚠ Baro-VNAV and VDP NA when using Owensboro altimeter setting. For uncompensated Baro-VNAV systems, LNAV/VNAV NA below -16°C or above 54°C. When local altimeter setting not received, use Owensboro altimeter setting and increase LPV and LNAV/VNAV DA to 851 feet. Increase all MDA 80 feet and LNAV Cat C visibility $\frac{3}{8}$ SM and Circling Cat C visibility $\frac{1}{4}$ SM. Circling Rwy 21 NA at night. Rwy 3 helicopter visibility reduction below $\frac{3}{8}$ SM NA.

MISSED APPROACH:
Climb to 2500 direct ZUTJO and hold.

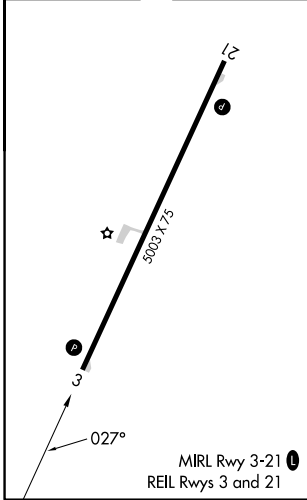
| | | |
|--------------------------|--|--|
| AWOS-3PT 132.1 | EVANSVILLE APP CON ★ 124.025 290.9 | UNICOM 122.8 (CTAF) 0 |
|--------------------------|--|--|



SE-1, 05 SEP 2024 to 03 OCT 2024

SE-1, 05 SEP 2024 to 03 OCT 2024

| | |
|----------|----------|
| ELEV 537 | TDZE 530 |
|----------|----------|



| CATEGORY | A | B | C | D |
|-------------------|-----------------------|-----------------------|--|----|
| LPV DA | | 780-1 250 (300-1) | | NA |
| LNAV/VNAV DA | | 780-1 250 (300-1) | | NA |
| LNAV MDA | 1040-1 | 510 (600-1) | 1040-1 $\frac{3}{8}$ 510 (600-1 $\frac{3}{8}$) | NA |
| C CIRCLING | 1040-1 503 (600-1) | 1100-1 563 (600-1) | 1300-2 $\frac{1}{4}$ 763 (800-2 $\frac{1}{4}$) | NA |