

APP CRS	Rwy Idg	3300
032°	TDZE	30
	Apt Elev	30

RNAV (GPS) RWY 2

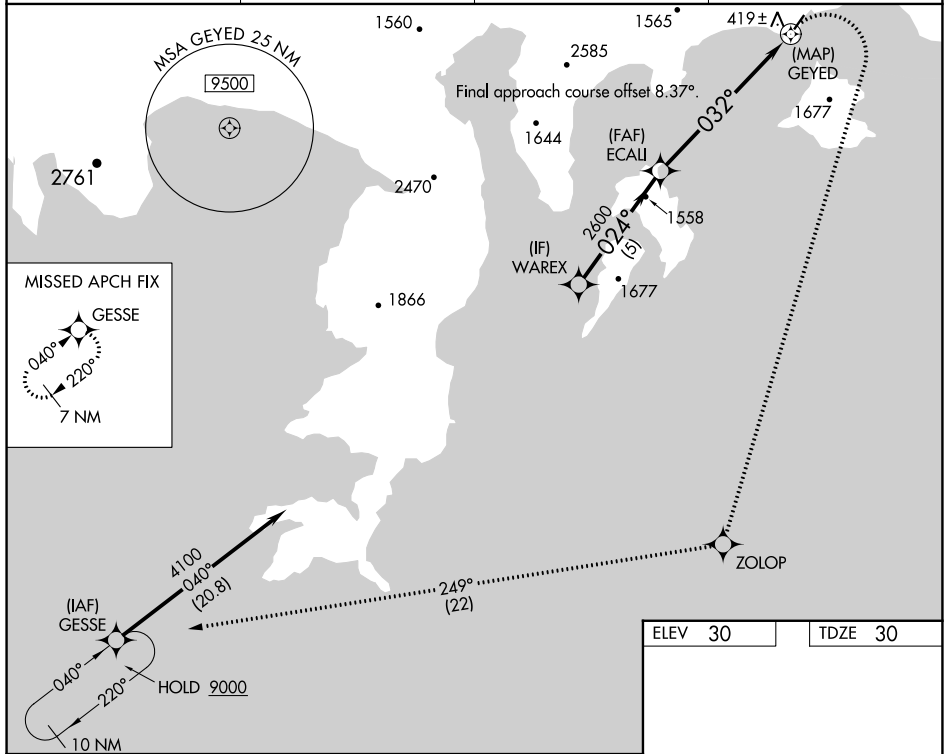
PERRYVILLE (PEV) (PAPF)

RNP APCH - GPS.

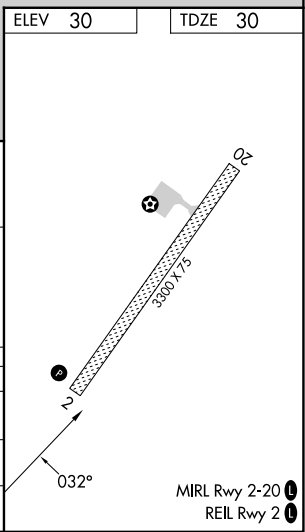
▼ Rwy 2 helicopter visibility reduction below 1 SM NA.
 ▲ NA Procedure NA at night. When local altimeter setting not received, use Chignik altimeter setting.

MISSED APPROACH: (Do not exceed 230K until completion of climbing right turn) Climbing right turn to 9000 direct ZOLOP and on track 249° to GESSE, continue climb-in-hold to 9000.
 *Missed approach requires minimum climb of 418' per NM to 2400.

AWOS-3P 118.1	AJC/PAJC AWOS-3P 135.75	ANCHORAGE CENTER 125.35 346.3	CTAF 122.90
-------------------------	-----------------------------------	---	-----------------------



	WAREX	ECAU	GEYED	
	4100	2600	2600	
	024°	032°	3.43° TCH 28	
	5 NM	6.8 NM	0.2	
CATEGORY	A	B	C	D
LNAV MDA*	1360-1¼ 1330 (1400-1¼)	1360-1½ 1330 (1400-1½)	1360-3	1330 (1400-3)
LNAV MDA	2080-1¼ 2050 (2100-1¼)	2080-1½ 2050 (2100-1½)	2080-3	2050 (2100-3)
CIRCLING	2080-1¼ 2050 (2100-1¼)	2080-1½ 2050 (2100-1½)	2160-3 2130 (2200-3)	NA



AK, 05 SEP 2024 to 31 OCT 2024

AK, 05 SEP 2024 to 31 OCT 2024