

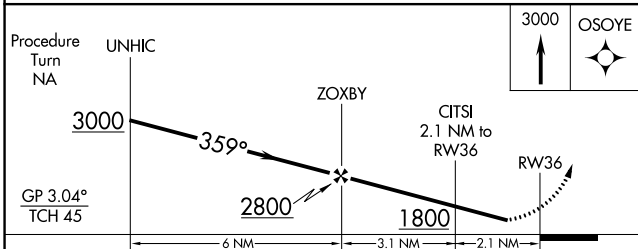
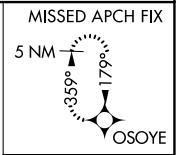
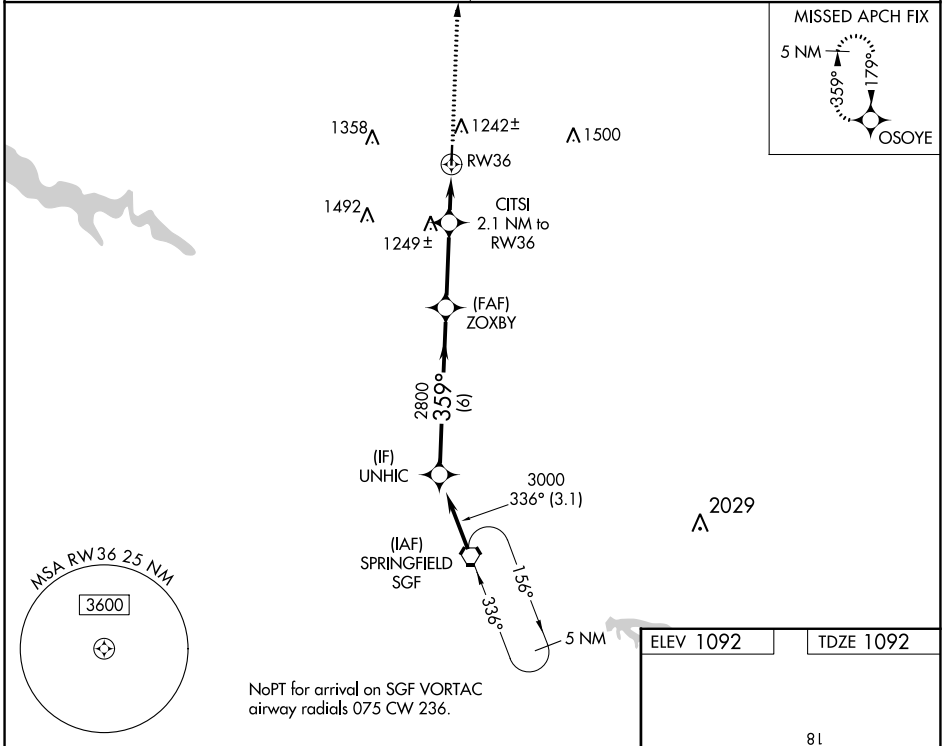
WAAS CH 78303 W36A	APP CRS 359°	Rwy Idg TDZE 1092 Apt Elev 1092
--	------------------------	---

RNAV (GPS) RWY 36

BOLIVAR MUNI (M17)

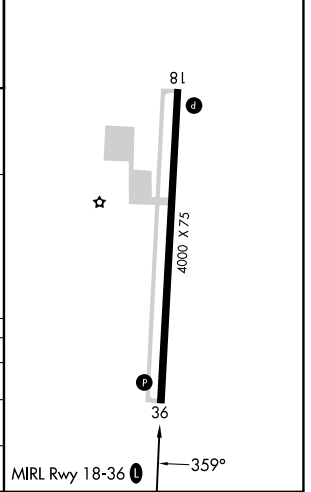
RNP APCH - GPS.	MISSED APPROACH: Climb to 3000 direct OSOYE and hold.
<p>▼ Rwy 36 helicopter visibility reduction below 3/4 SM NA.</p> <p>▲ NA Use Springfield-Branson Ntl Altimeter setting. Circling Rwy 18 NA at night.</p>	

SPRINGFIELD APP CON 124.95 318.2	UNICOM 123.0 (CTAF) 0
--	---------------------------------



ELEV 1092	TDZE 1092
-----------	-----------

CATEGORY	A	B	C	D
LPV DA	1448-1 1/8 356 (400-1 1/8)			NA
LNAV MDA	1580-1	488 (500-1)	1580-1 1/4 488 (500-1 1/4)	NA
CIRCLING	1660-1	568 (600-1)	1740-1 3/4 648 (700-1 3/4)	NA



NC-3, 05 SEP 2024 to 03 OCT 2024

NC-3, 05 SEP 2024 to 03 OCT 2024