

WAAS CH 53526 W02A	APP CRS 016°	Rwy Idg TDZE Apt Elev	4000 341 348
--	------------------------	-----------------------------	---

RNAV (GPS) RWY 2

HOUSTON COUNTY (DKR)

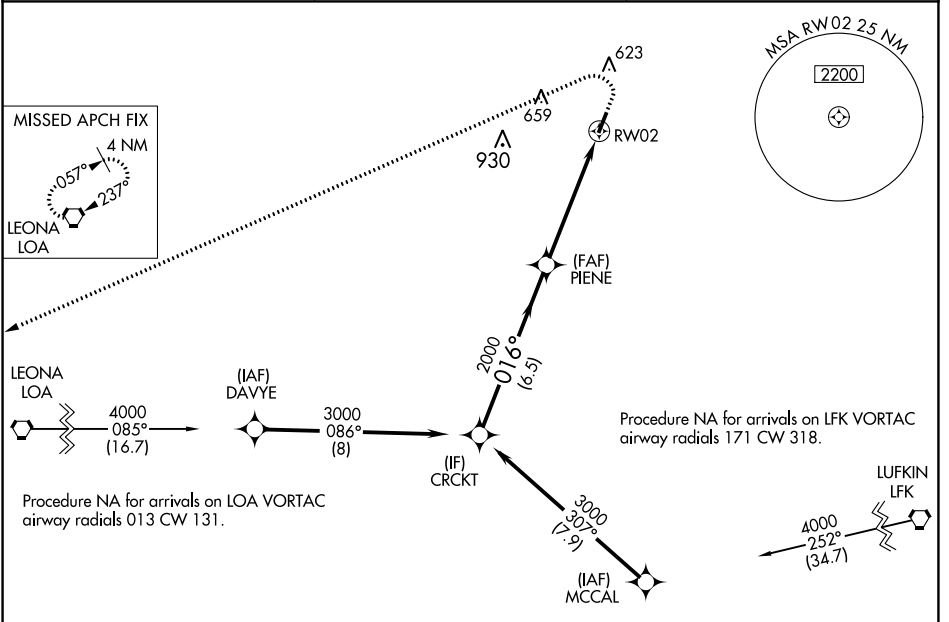
⚠ DME/DME RNP-0.3 NA. When local altimeter setting not received, use Palestine altimeter setting and increase all MDA 100 feet. Procedure NA at night. Helicopter visibility reduction below 1 SM NA.

MISSED APPROACH: Climb to 1000 then climbing left turn to 4000 direct LOA VORTAC and hold.

AWOS-3PT
118.775

HOUSTON CENTER
134.8 269.6

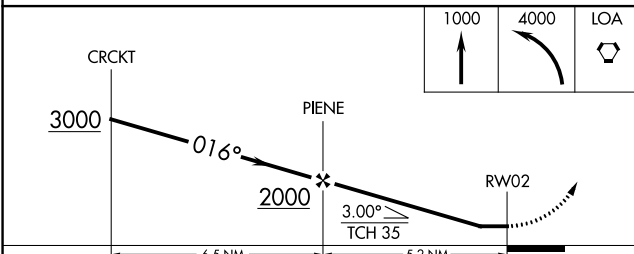
CTAF
122.9 0



SC-5, 05 SEP 2024 to 03 OCT 2024

SC-5, 05 SEP 2024 to 03 OCT 2024

ELEV 348	TDZE 341
----------	----------



CATEGORY	A		B		C		D	
	LP	MDA	LP	MDA	LP	MDA	LP	MDA
LP	MDA	820-1	479	(500-1)			NA	
LNNAV	MDA	840-1	499	(500-1)			NA	
CIRCLING		880-1		980-1			NA	
		532 (600-1)		632 (700-1)				

