

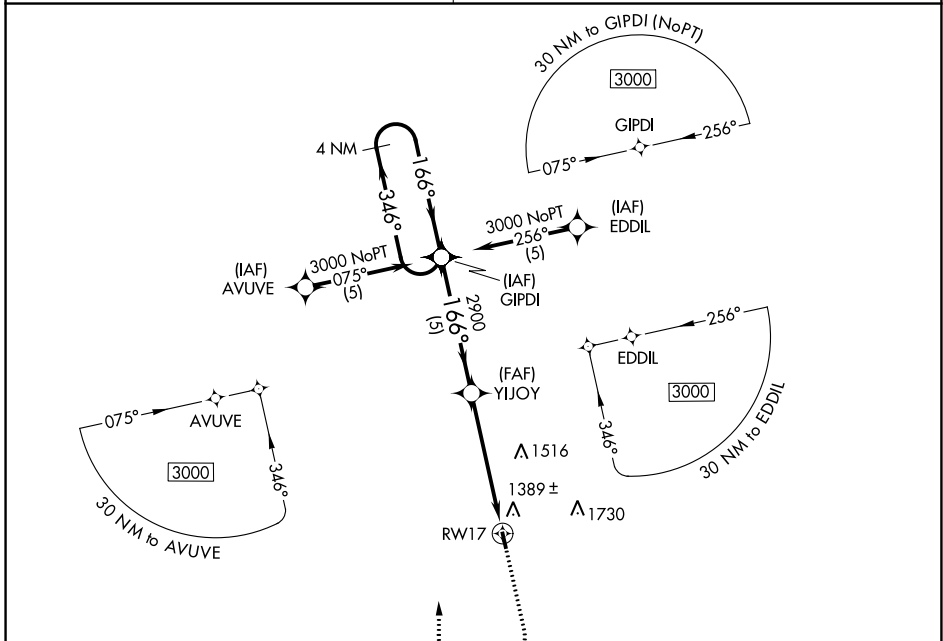
APP CRS	Rwy Idg	<b>2998</b>
<b>166°</b>	TDZE	<b>1241</b>
	Apt Elev	<b>1241</b>

# RNAV (GPS) RWY 17

SALEM MEML (K33)

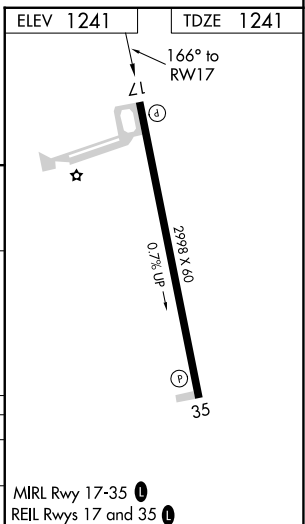
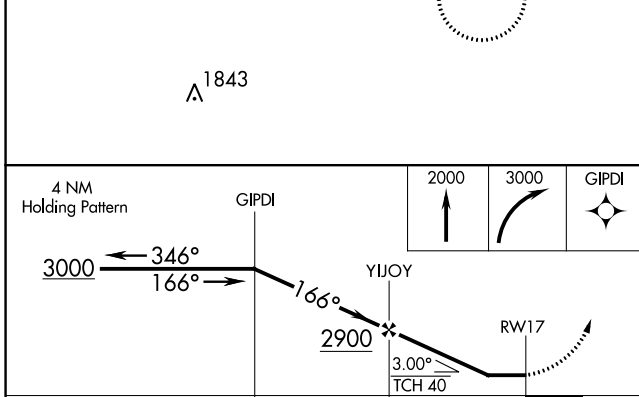
RNP APCH.	Use Rolla Nil altimeter setting.	MISSED APPROACH: Climb to 2000 then climbing right turn to 3000 direct GIPDI WP and hold.
▼	Rwy 17 helicopter visibility reduction below 3/4 SM NA.	

KANSAS CITY CENTER <b>128.35 284.675</b>	CTAF <b>122.9</b>
---	----------------------



NC-3, 05 SEP 2024 to 03 OCT 2024

NC-3, 05 SEP 2024 to 03 OCT 2024



CATEGORY	A	B	C	D
LNAV	1740-1	499 (500-1)		NA
CIRCLING	1840-1	599 (600-1)		NA

MIRL Rwy 17-35  
REIL Rws 17 and 35