

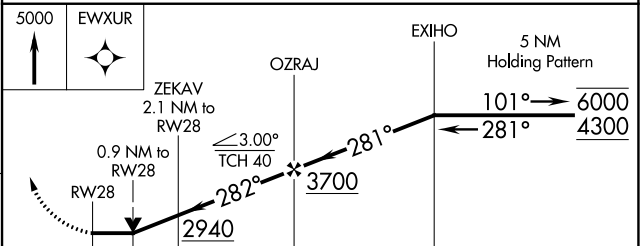
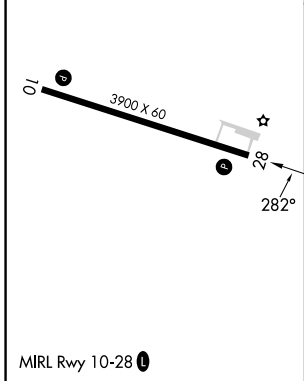
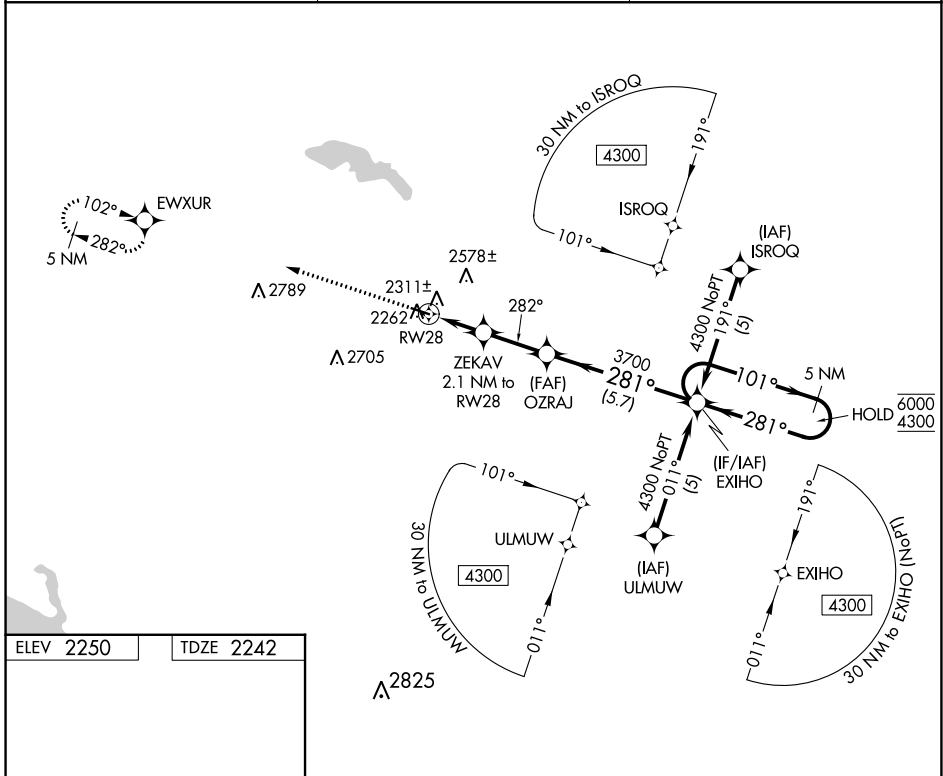
APP CRS	Rwy Idg	3900
282°	TDZE	2242
	Apt Elev	2250

RNAV (GPS) RWY 28

STANLEY MUNI (Ø8D)

RNP APCH - GPS.	MISSED APPROACH: Climb to 5000 direct EWXUR and hold, continue climb-in-hold to 5000.
Rwy 28 helicopter visibility reduction below ¼ SM NA.	

AWOS-3 121.1	MINNEAPOLIS CENTER 127.6 279.6	CTAF 122.9
------------------------	--	----------------------



CATEGORY	A	B	C	D
LNAV MDA	2580-1	338 (400-1)	NA	
CIRCLING	2720-1 470 (500-1)	2940-1 690 (700-1)	NA	

NC-1, 05 SEP 2024 to 03 OCT 2024

NC-1, 05 SEP 2024 to 03 OCT 2024