

WAAS CH 77636 W19A	APP CRS 187°	Rwy Idg 4292 TDZE 491 Apt Elev 492
--	------------------------	---

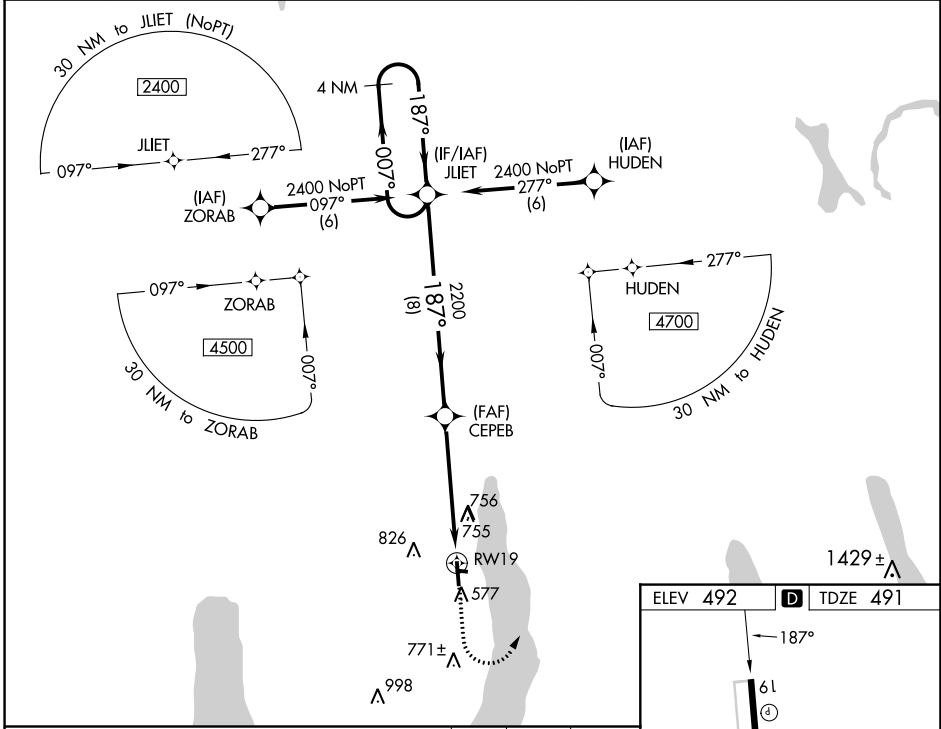
RNAV (GPS) RWY 19

FINGER LAKES RGNL (ØG7)

▽ **Δ** NA
 For uncompensated Baro-VNAV systems, LNAV/VNAV NA below -15°C (5°F) or above 54°C (130°F). Baro-VNAV and VDP NA when using Syracuse altimeter setting. Rwy 19 helicopter visibility reduction below ¾ SM NA. DME/DME RNP-0.3 NA. When local altimeter setting not received, use Syracuse altimeter setting and increase all LPV DA to 856 feet, LNAV/VNAV DA to 1226 feet and all MDA 100 feet; increase LPV all Cats visibility ¼ SM and LNAV/VNAV all Cats visibility ½ SM.

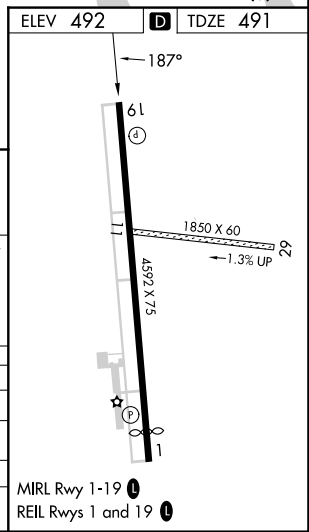
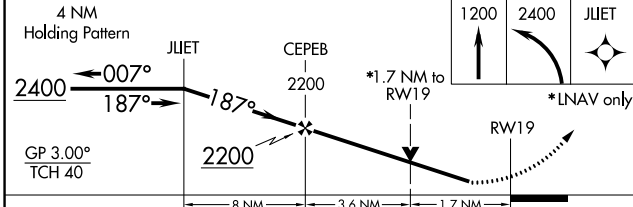
MISSED APPROACH:
 Climb to 1200 then climbing left turn to 2400 direct JLIET and hold.

AWOS-3 120.0	SYRACUSE APP CON 126.125 269.125	ROCHESTER APP CON 119.55 269.6 (W-NW)	ELMIRA APP CON * 124.3 257.8 (SW-SE)	UNICOM 122.8 (CTAF) Ø
------------------------	--	---	--	---------------------------------



NE-2, 05 SEP 2024 to 03 OCT 2024

NE-2, 05 SEP 2024 to 03 OCT 2024



CATEGORY	A	B	C	D
LPV DA	770-1	279 (300-1)		NA
LNAV/VNAV DA	1140-2½	649 (700-2½)		NA
LNAV MDA	1060-1	569 (600-1)		NA
C CIRCLING	1060-1 568 (600-1)	1180-1 688 (700-1)		NA