

APP CRS	Rwy Idg	<b>4195</b>
<b>182°</b>	TDZE	<b>2941</b>
	Apt Elev	<b>2941</b>

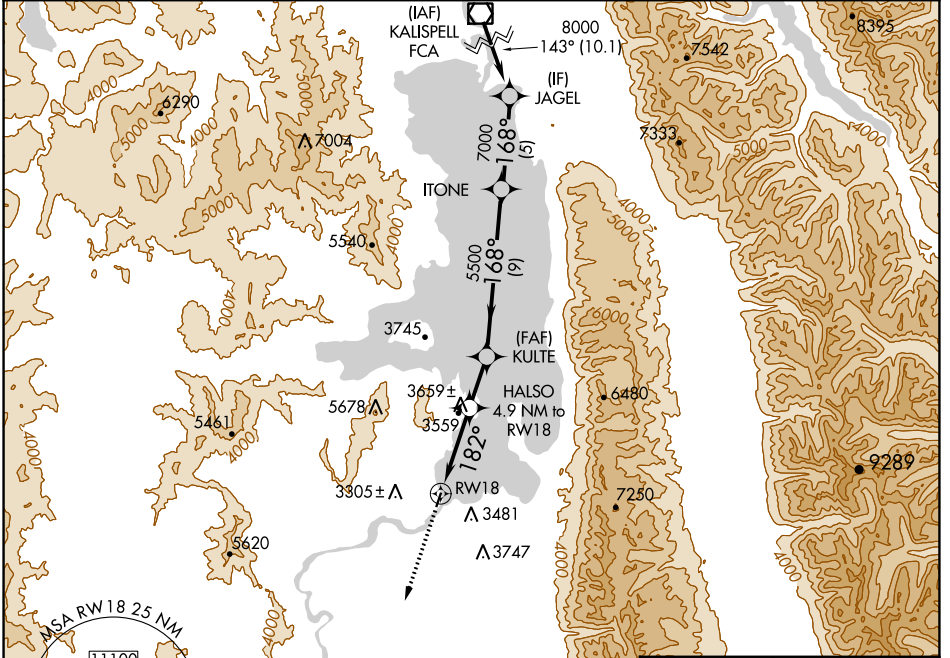
# RNAV (GPS) RWY 18

POLSON (8S1)

**Procedure NA at night. DME/DME RNP-0.3 NA.**  
 Use Glacier Park Intl altimeter setting.  
 Helicopter visibility reduction below 1 SM NA.

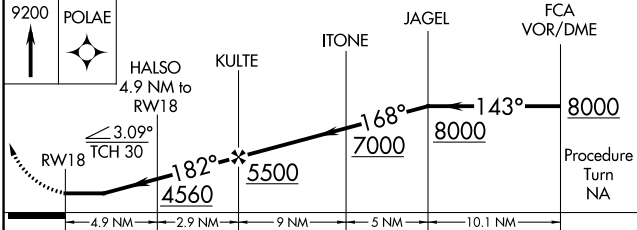
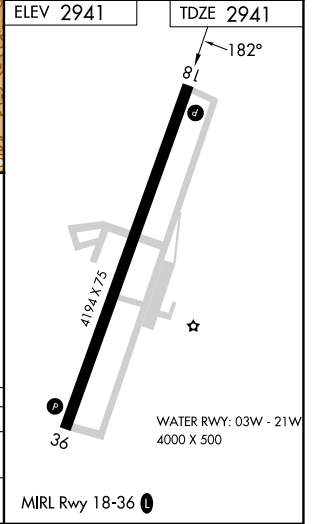
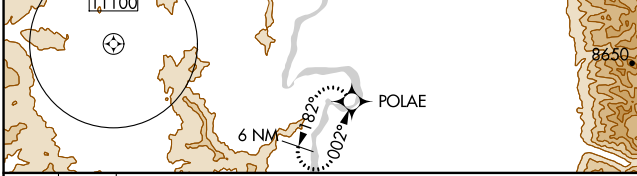
**MISSED APPROACH:** Climb to 9200 direct POLAE and hold.

GPI ASOS <b>132.625</b>	SALT LAKE CENTER <b>127.075 244.875</b>	UNICOM <b>122.8 (CTAF) 0</b>
----------------------------	--	---------------------------------



NW-1, 05 SEP 2024 to 03 OCT 2024

NW-1, 05 SEP 2024 to 03 OCT 2024



CATEGORY	A	B	C	D
LNAV MDA	4480-1¼ 1539 (1600-1¼)	4480-1½ 1539 (1600-1½)	NA	NA
CIRCLING	4480-1¼ 1539 (1600-1¼)	4480-1½ 1539 (1600-1½)	NA	NA