

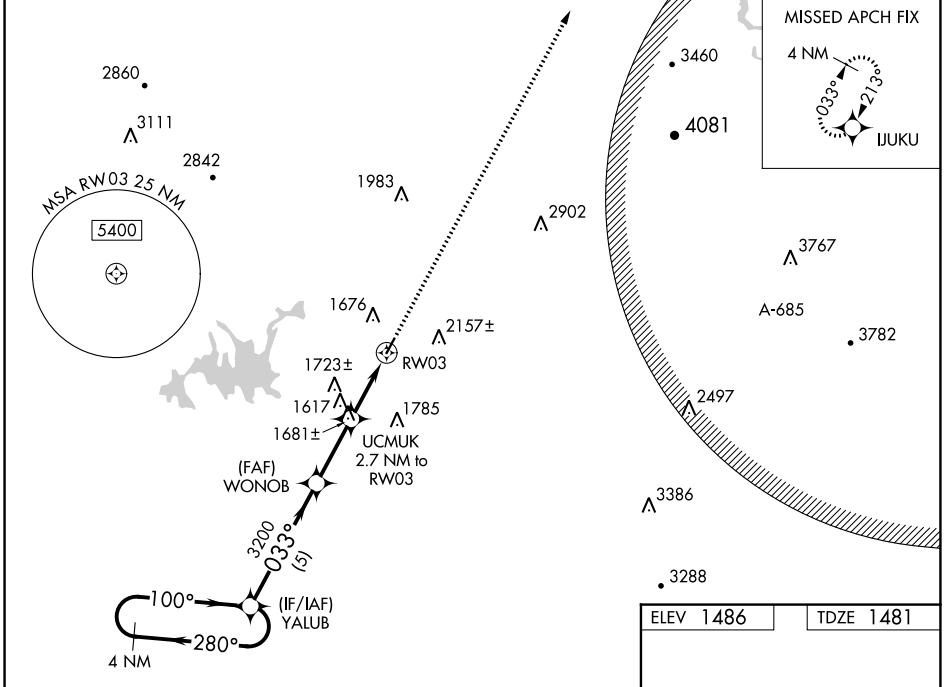
WAAS CH <b>45941</b> <b>W03A</b>	APP CRS <b>033°</b>	Rwy Idg TDZE <b>1481</b> Apt Elev <b>1486</b>	<b>3507</b> <b>1481</b> <b>1486</b>
--	------------------------	---	---

# RNAV (GPS) RWY 3

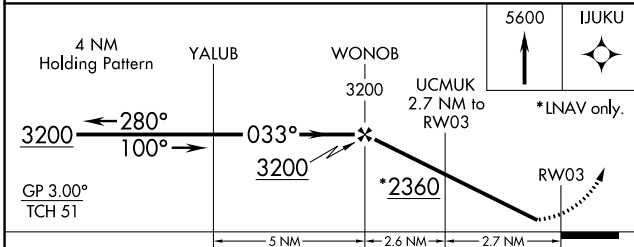
GILMER COUNTY (49A)

RNP APCH.	MISSED APPROACH: Climb to 5600 direct IJUKU and hold, continue climb-in-hold to 5600.
<p><b>▽</b> <b>▲</b></p> <p>For uncompensated Baro-VNAV systems, LNAV/VNAV NA below -17°C (2°F) or above 54°C (130°F). Rwy 3 helicopter visibility reduction below 1 SM NA. Procedure NA at night.</p>	

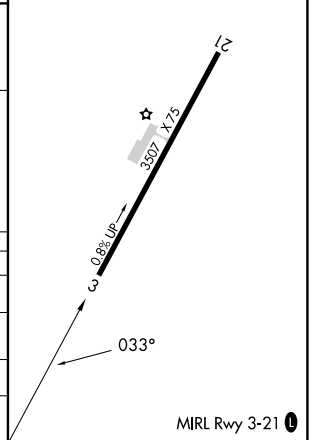
AWOS-3 <b>118.075</b>	ATLANTA CENTER <b>133.1 342.425</b>	UNICOM <b>123.0 (CTAF)</b>
--------------------------	--	-------------------------------



ELEV 1486	TDZE 1481
-----------	-----------



CATEGORY	A	B	C	D
LPV DA		1731-1	250 (300-1)	
LNAV/VNAV DA		1790-1	309 (400-1)	
LNAV MDA	1880-1	399 (400-1)	1880-1 <sup>1</sup> / <sub>8</sub>	399 (400-1 <sup>1</sup> / <sub>8</sub> )
<b>C</b> CIRCLING	1980-1 494 (500-1)	2560-1 <sup>1</sup> / <sub>2</sub> 1074 (1100-1 <sup>1</sup> / <sub>2</sub> )	2560-3	1074 (1100-3)



SE-4, 05 SEP 2024 to 03 OCT 2024

SE-4, 05 SEP 2024 to 03 OCT 2024