

APP CRS	Rwy Idg	N/A
082°	TDZE	N/A
	Apt Elev	3798

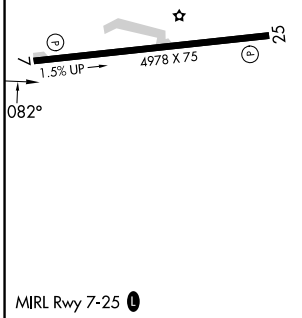
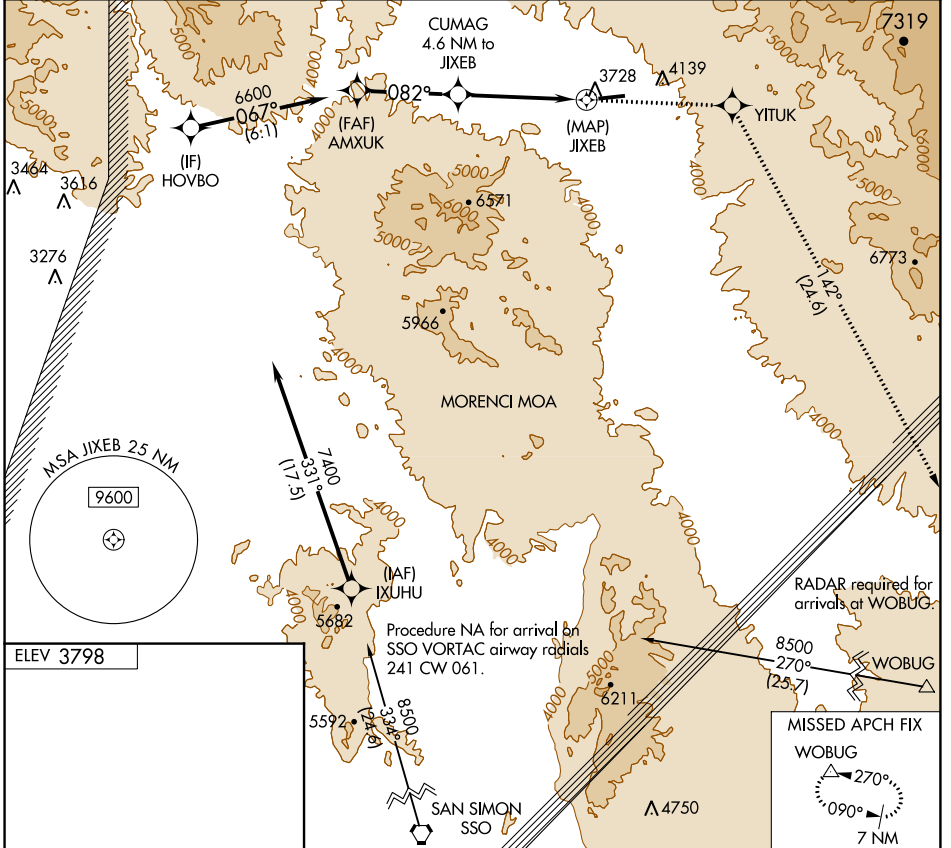
RNAV (GPS)-A

GREENLEE COUNTY (CFT)

NA When VGSI inop, Circling Rwy 25 NA at night. DME/DME RNP-0.3 NA. When local altimeter setting not received, use Safford altimeter setting and increase all MDA 140 feet. Rwy 25 helicopter visibility below 1 SM NA.

MISSED APPROACH: Climb to 9000 direct YITUK and on track 142° to WOBUG and hold.

AWOS-3 119.05	ALBUQUERQUE APP CON 134.45 327.15	CTAF 122.9
-------------------------	---	----------------------



HOVBO	AMXUK	CUMAG 4.6 NM to JIXEB	JIXEB	WOBUG
7400	6600	5300	9000	8500
067°		082°		270°
6.1 NM		3.6 NM		4.6 NM
A		B		C
5000-1¼ 1202 (1300-1¼)		5000-1½ 1202 (1300-1½)		NA
MIRL Rwy 7-25		MISSED APCH FIX WOBUG		7 NM

SW-4, 05 SEP 2024 to 03 OCT 2024

SW-4, 05 SEP 2024 to 03 OCT 2024