

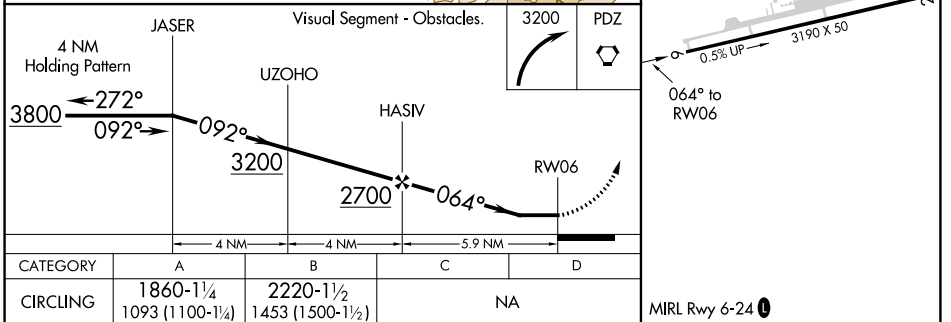
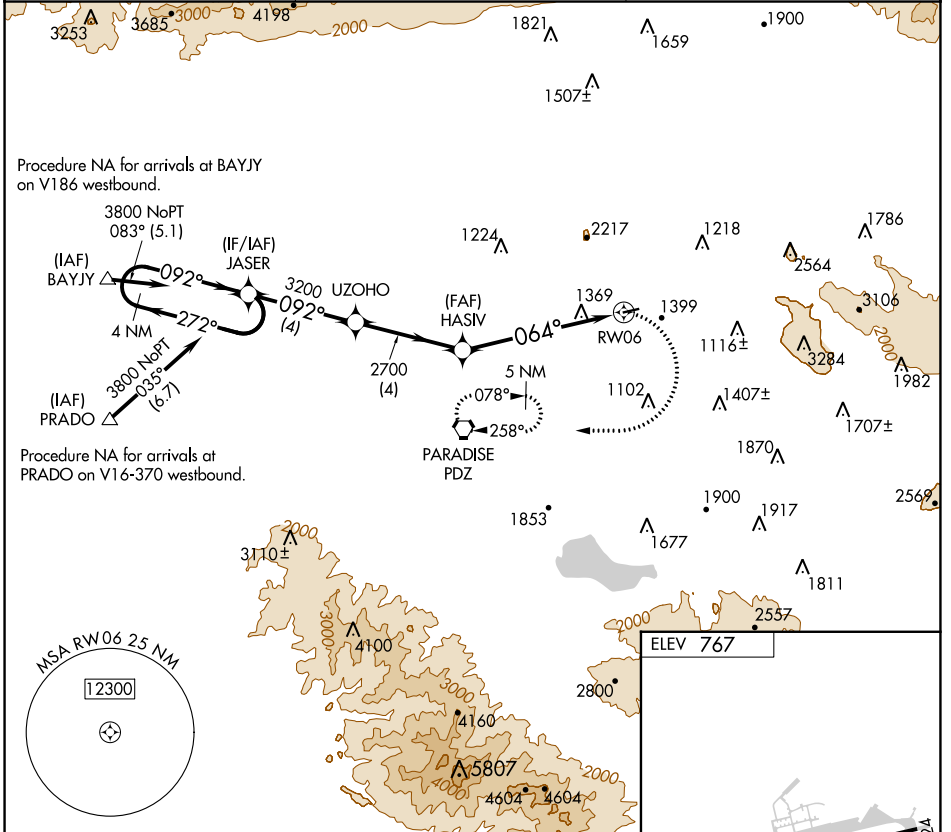
APP CRS	Rwy Idg	N/A
064°	TDZE	N/A
	Apt Elev	767

RNAV (GPS)-A

FLABOB (RIR)

RNP APCH.	MISSED APPROACH: Climbing right turn to 3200 direct PDZ VORTAC and hold.
<p>Procedure NA at night. Use Riverside Muni altimeter setting; when not received, use Ontario altimeter setting and increase all MDA 60 feet.</p>	

RAL ASOS 128.8	SOCAL APP CON 135.4 377.125	UNICOM 122.8 (CTAF) 0
--------------------------	---------------------------------------	---------------------------------



CATEGORY	A	B	C	D
CIRCLING	1860-1¼ 1093 (1100-1¼)	2220-1½ 1453 (1500-1½)	NA	

MIRL Rwy 6-24 0

SW-3, 05 SEP 2024 to 03 OCT 2024

SW-3, 05 SEP 2024 to 03 OCT 2024