

APP CRS	Rwy Idg	N/A
003°	TDZE	N/A
	Apt Elev	880

# RNAV (GPS)-A

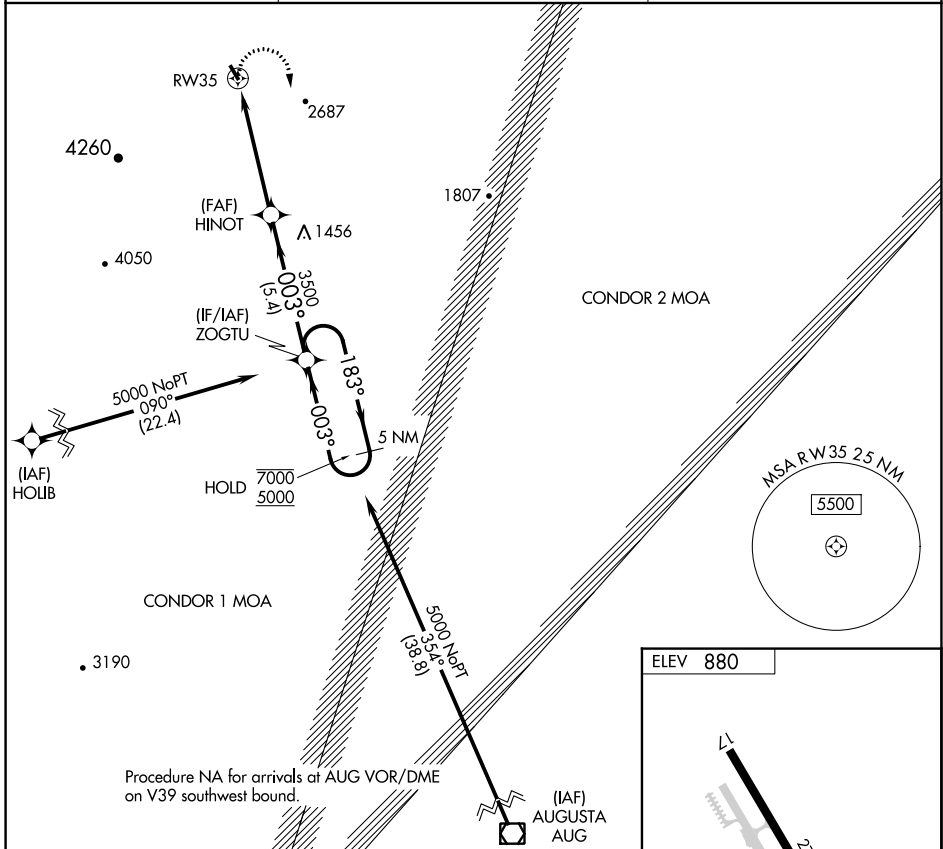
SUGARLOAF RGNL (B21)

RNP APCH - GPS.

**Procedure NA at night. Rwy 17 and 35 helicopter visibility reduction below 1 SM NA.**  
**NA** When local altimeter setting not received, use Rangeley altimeter setting.

**MISSED APPROACH:**  
 Climbing right turn to 5000  
 direct ZOGTU and hold.

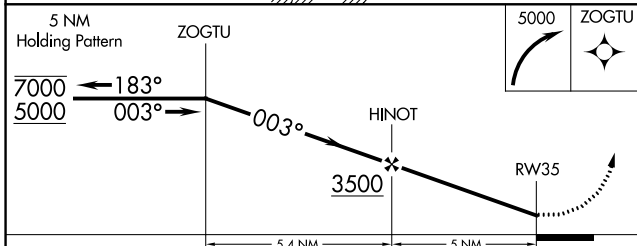
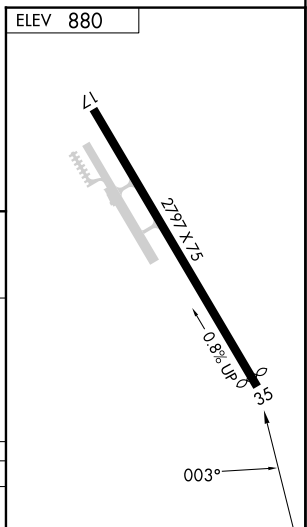
AWOS-AV <b>120.0</b>	BOSTON CENTER <b>120.25 346.4</b>	UNICOM <b>122.8 (CTAF)</b>
-------------------------	--------------------------------------	-------------------------------



NE-1, 05 SEP 2024 to 03 OCT 2024

NE-1, 05 SEP 2024 to 03 OCT 2024

Procedure NA for arrivals at AUG VOR/DME on V39 southwest bound.



CATEGORY	A	B	C	D
<b>C</b> CIRCLING	3000-1¼ 2120 (2200-1¼)	3000-1½ 2120 (2200-1½)	NA	