

RNAV (GPS) RWY 21

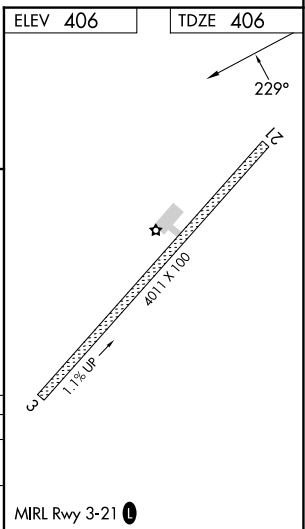
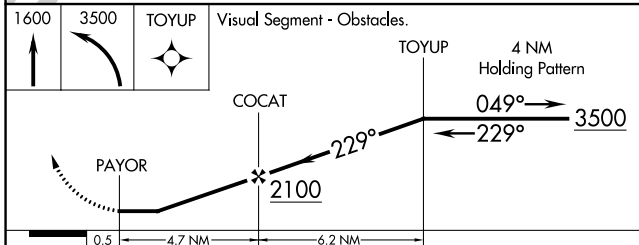
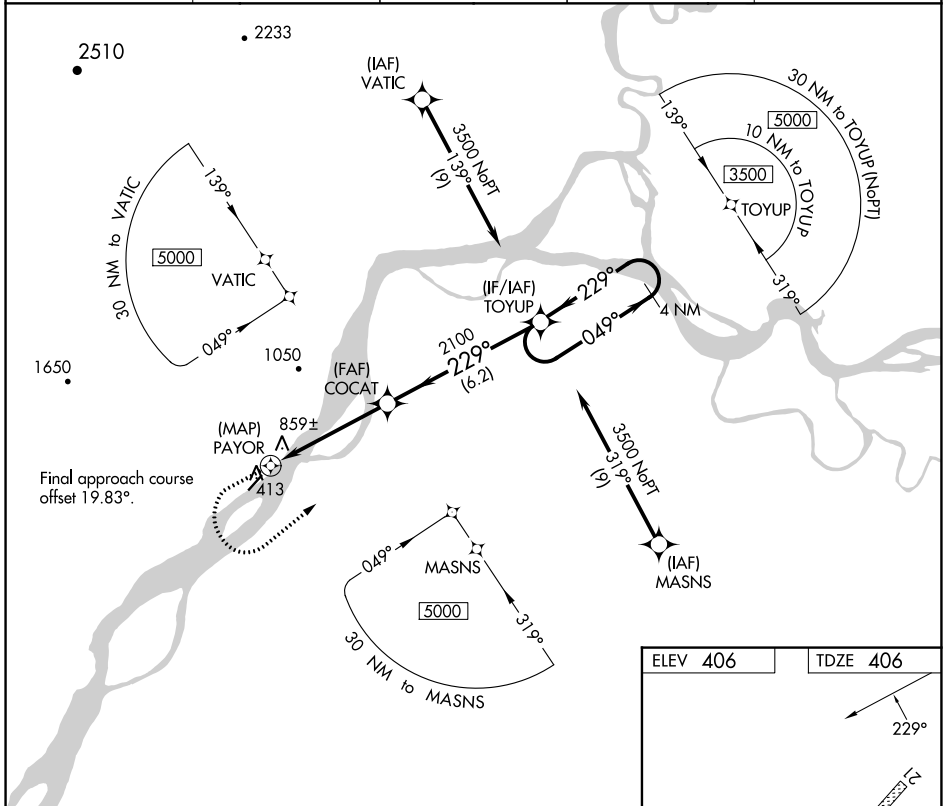
NULATO (NUL) (PANU)

APP CRS 229°	Rwy Idg 4011
	TDZE 406
	Apt Elev 406

⚠ NA Rwy 21 helicopter visibility reduction below 1 SM NA. DME/DME RNP-0.3 NA. Use Galena altimeter setting. Procedure NA at night.

⚠ MISSED APPROACH: Climb to 1600 then climbing left turn to 3500 direct TOYUP and hold.

AWOS-3P 118.0	GAL/PAGA AWOS-3P 132.525	ANCHORAGE CENTER 127.0 290.2	FAIRBANK RADIO 122.2	UNICOM 122.9
-------------------------	------------------------------------	--	--------------------------------	------------------------



CATEGORY	A	B	C	D
LNVA MDA	1220-1 814 (900-1)	1220-1¼ 814 (900-1¼)	1220-2½ 814 (900-2½)	814 (900-2½)
C CIRCLING	1280-1¼ 874 (900-1¼)	1380-1½ 974 (1000-1½)	1420-3 1014 (1100-3)	1620-3 1214 (1300-3)

AK, 05 SEP 2024 to 31 OCT 2024

AK, 05 SEP 2024 to 31 OCT 2024