

APP CRS	Rwy Idg	3281
137°	TDZE	364
	Apt Elev	364

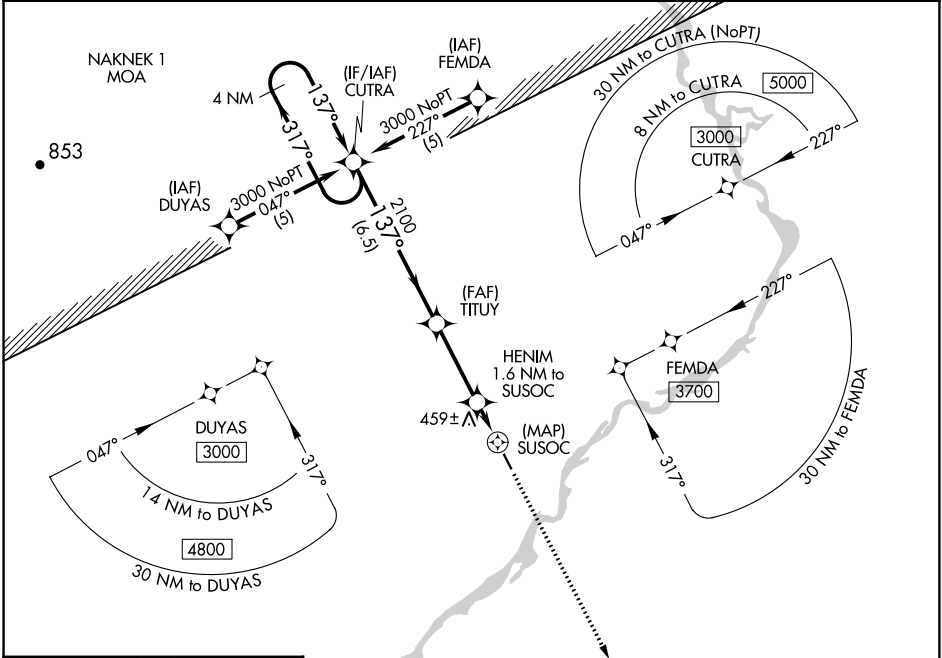
RNAV (GPS) RWY 14

NEW STUYAHOK (KNW) (PANW)

▼ When local altimeter setting not received, use Koliganek altimeter setting and increase all MDAs 60 feet. Procedure NA at night.
▲ DME/DME RNP-0.3 NA. Visibility reduction by helicopters NA.

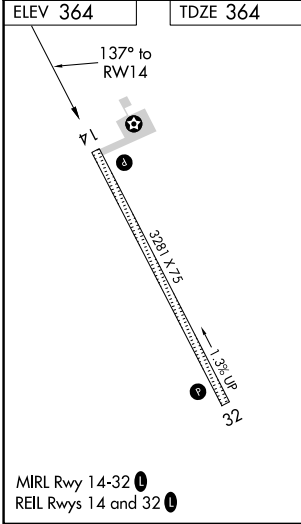
MISSED APPROACH: Climb to 3000 direct JIKAL and hold.

AWOS-3P 120.275	ANCHORAGE CENTER 132.75 282.35	DILLINGHAM RADIO 122.55	CTAF 122.9
---------------------------	--	-----------------------------------	----------------------



AK, 05 SEP 2024 to 31 OCT 2024

AK, 05 SEP 2024 to 31 OCT 2024



4 NM Holding Pattern	CUTRA	TITUY	HENIM 1.6 NM to SUSOC	3000	JIKAL
3000	← 317° →	137°	3.05° TCH 35	↑	✧
		2100	1060		
	← 6.5 NM →	← 3.2 NM →	← 1.6 NM →	← 0.5 NM →	
CATEGORY	A	B	C	D	
LNAV MDA	780-1	416 (500-1)		NA	
CIRCLING	780-1	840-1	476 (500-1)		NA