

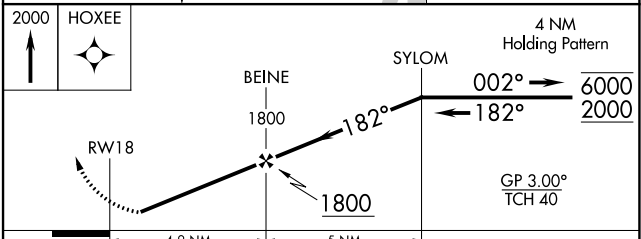
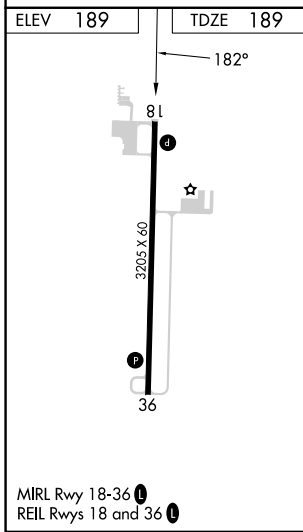
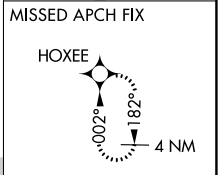
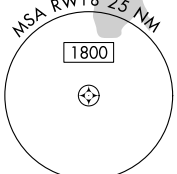
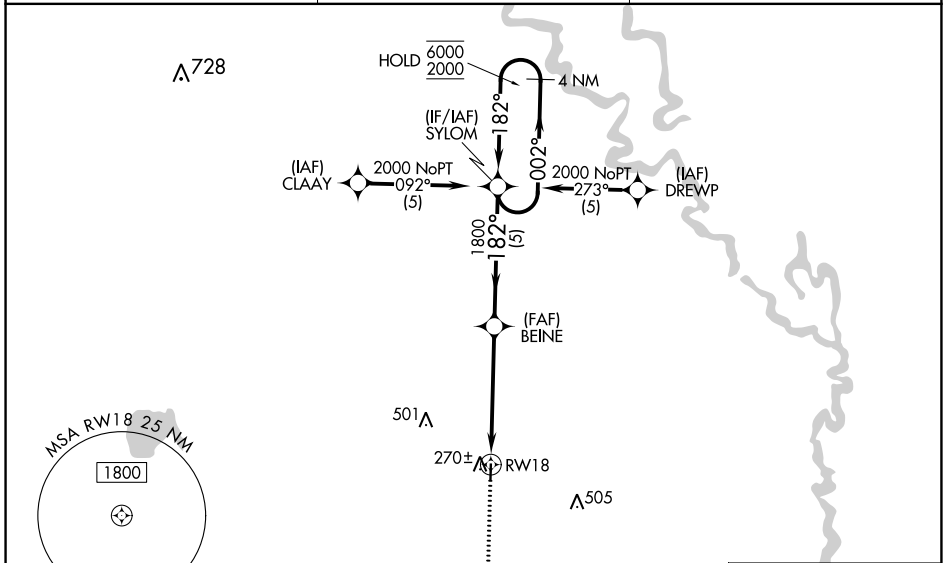
WAAS CH 86344 W 18A	APP CRS 182°	Rwy Idg 3205 TDZE 189 Apt Elev 189
---	------------------------	---

RNAV (GPS) RWY 18

DEWITT MUNI/WHITCOMB FLD (5M1)

RNP APCH - GPS.	<p>▼ Rwy 18 helicopter visibility reduction below $\frac{3}{4}$ SM NA. Baro-VNAV NA. Use Stuttgart altimeter setting; when not received, use Pine Bluff altimeter setting and increase LPV DA to 515 feet, LNAV/VNAV DA to 515 feet, and increase all MDAs 20 feet.</p> <p>▲ NA</p>	MISSED APPROACH: Climb to 2000 direct HOXEE and hold.
-----------------	--	---

SGT AWOS-3PT 119.025	MEMPHIS CENTER 135.3 335.8	CTAF 122.9
--------------------------------	--------------------------------------	----------------------



CATEGORY	A	B	C	D
LPV DA	500-1	311 (400-1)	NA	
LNAV/VNAV DA	500-1	311 (400-1)	NA	
LNAV MDA	720-1	531 (600-1)	NA	

SC-1, 05 SEP 2024 to 03 OCT 2024

SC-1, 05 SEP 2024 to 03 OCT 2024