

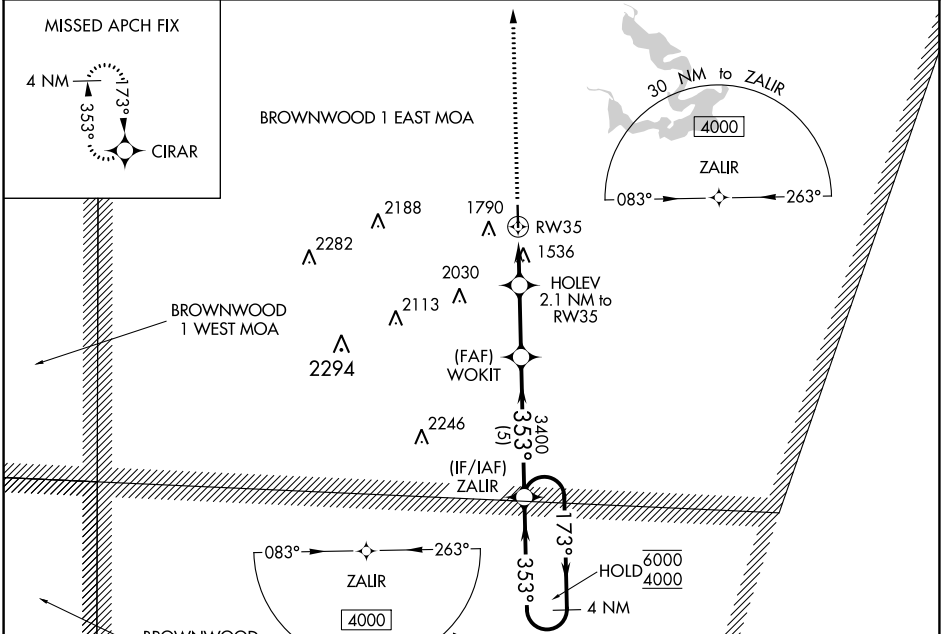
WAAS CH 61136 W35A	APP CRS 353°	Rwy Idg TDZE 1384 Apt Elev 1387	4497
--	------------------------	---	-------------

RNAV (GPS) RWY 35

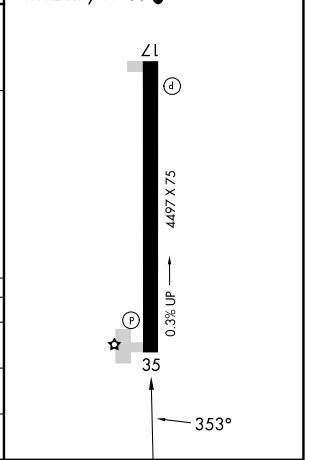
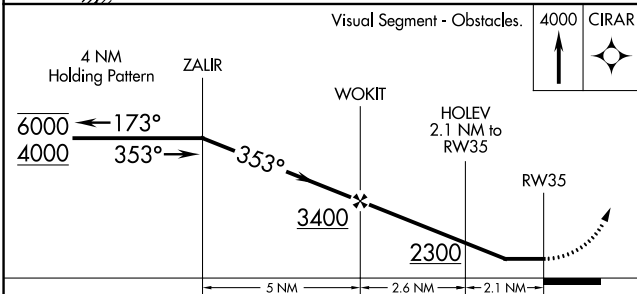
COMANCHE COUNTY-CITY (MKN)

RNP APCH Rwy 35 helicopter visibility reduction below 1 SM NA. Rwy 35 Straight-In and Circling minimums NA at night. When local altimeter setting not received, use Brownwood altimeter setting and increase all MDA 60 feet.	MISSED APPROACH: Climb to 4000 direct CIRAR and hold.
---	---

AWOS-3 118.575	FORT WORTH CENTER 127.15 314.0	UNICOM 123.075 (CTAF) 0
--------------------------	--	-----------------------------------



ELEV 1387	TDZE 1384
------------------	------------------



CATEGORY	A	B	C	D
LP MDA	1840-1	456 (500-1)		NA
LNAV MDA	1840-1	456 (500-1)		NA
CIRCLING	2100-1	713 (800-1)		NA

SC-3, 05 SEP 2024 to 03 OCT 2024

SC-3, 05 SEP 2024 to 03 OCT 2024