

WAAS CH 50346 W35A	APP CRS 345°	Rwy Idg TDZE 63 Apt Elev 63	3601
--	------------------------	---	-------------

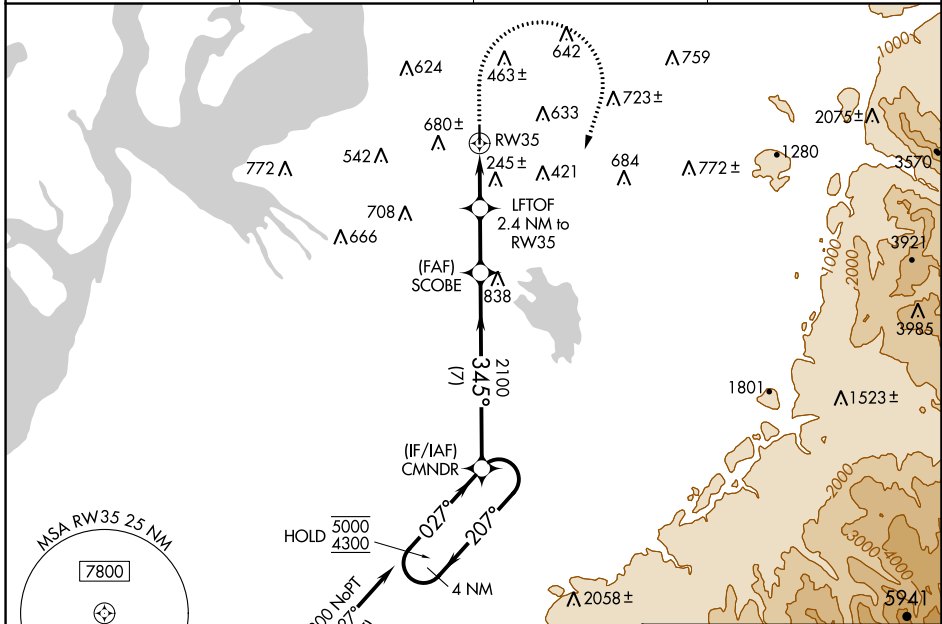
RNAV (GPS) RWY 35

AUBURN MUNI (S50)

RNP APCH - GPS.
 ⚠ Circling NA west of Rwy 17-35. Baro-VNAV NA. Rwy 35 helicopter visibility reduction below 1 SM NA. Circling Rwy 17 NA at night. Use Seattle-Tacoma Intl altimeter setting.

MISSED APPROACH: Climb to 700 then climbing right turn to 4400 direct CMNDR and hold, continue climb-in-hold to 4400.

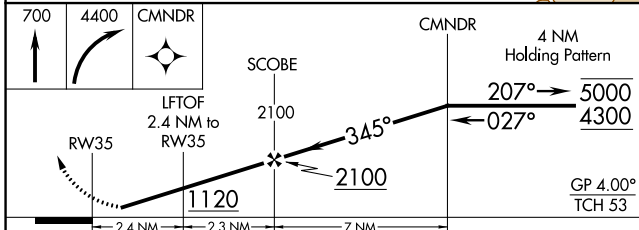
SEA ASOS 118.0	SEATTLE APP CON 123.85	CLNC DEL 123.85	UNICOM 122.975 (CTAF) 0
--------------------------	----------------------------------	---------------------------	--



NW-1, 05 SEP 2024 to 03 OCT 2024

NW-1, 05 SEP 2024 to 03 OCT 2024

ELEV 63	TDZE 63
MIRL Rwy 17-35 0	REIL Rwys 17 and 35 0
Procedure NA for arrivals at CIDUG on V495 southbound.	



CATEGORY	A	B	C	D
LPV DA	459-1 ¹ / ₈	396 (400-1 ¹ / ₈)		NA
LNAV/VNAV DA	702-1 ³ / ₄	639 (700-1 ³ / ₄)		NA
LNAV MDA	740-1	677 (700-1)		NA
CIRCLING	920-1 ¹ / ₄ 857 (900-1 ¹ / ₄)	1040-1 ¹ / ₂ 977 (1000-1 ¹ / ₂)		NA

