

VORTAC ROD 117.5 Chan 122	APP CRS 249°	Rwy Idg TDZE 1122 Apt Elev 1122	5000
---	------------------------	---	-------------

VOR RWY 25

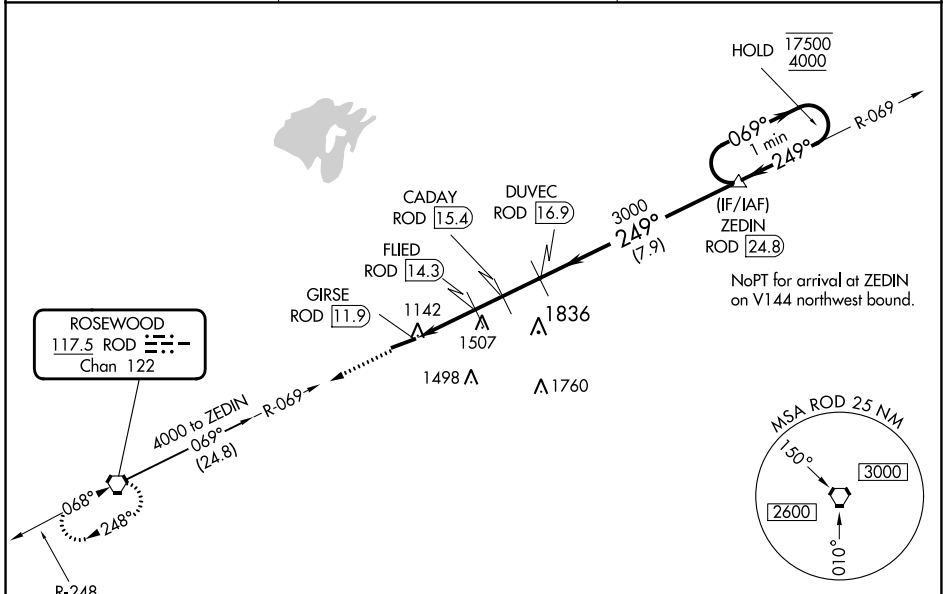
BELLEFONTAINE RGNL (E.D.J)

DME required.

⚠ Rwy 25 helicopter visibility reduction below 3/4 SM NA. When local altimeter setting not received, use James M Cox Dayton Intl altimeter setting and increase all MDAs 100 feet, and S-25 visibility Cats C and D 1/2 SM, and Circling visibility Cats A, C, and D 1/4 SM. VDP NA when using James M Cox Dayton Intl altimeter setting.

MISSED APPROACH: Climb to 3000 on ROD R-069 to ROD VORTAC and hold.

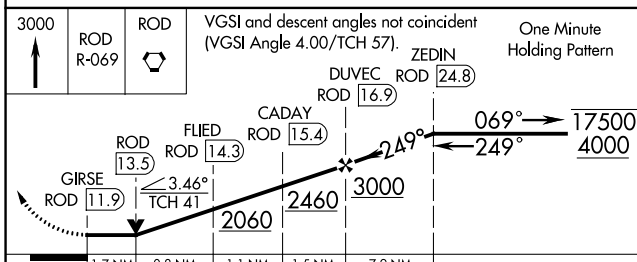
AWOS-3 118.075	COLUMBUS APP CON 134.45 294.5	UNICOM 122.8 (CTAF)
--------------------------	---	-------------------------------



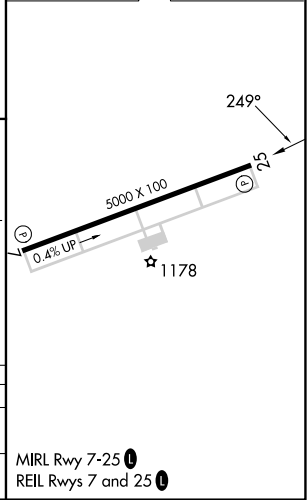
EC-2, 05 SEP 2024 to 03 OCT 2024

EC-2, 05 SEP 2024 to 03 OCT 2024

ELEV 1122	TDZE 1122
-----------	-----------



CATEGORY	A	B	C	D
S-25	1880-1 758 (800-1)	1880-1 1/4 758 (800-1 1/4)	1880-2	758 (800-2)
CIRCLING	1880-1 758 (800-1)	1880-1 1/4 758 (800-1 1/4)	1880-2 1/4 758 (800-2 1/4)	2000-2 3/4 878 (900-2 3/4)



MIRL Rwy 7-25
REIL Rws 7 and 25