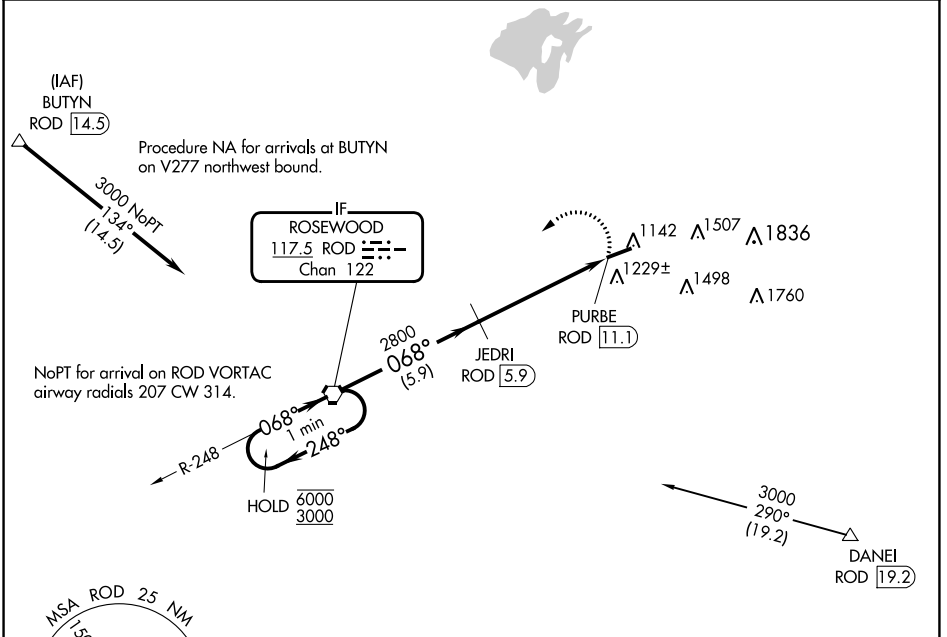


VORTAC ROD <b>117.5</b> Chan <b>122</b>	APP CRS <b>068°</b>	Rwy Idg TDZE <b>1112</b> Apt Elev <b>1122</b>	<b>5000</b> <b>1112</b> <b>1122</b>
---	------------------------	---	---

# VOR RWY 7

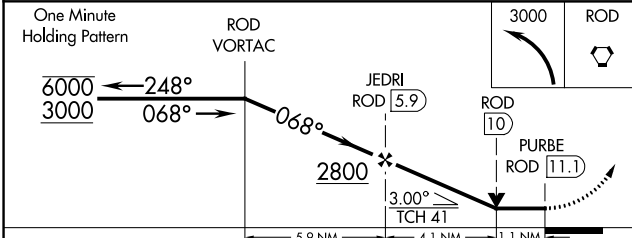
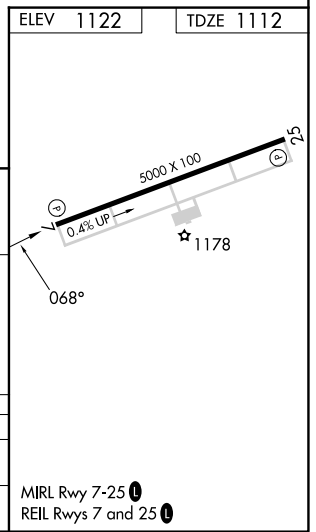
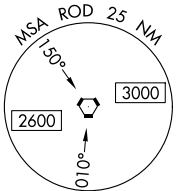
BELLEFONTAINE RGNL (EDJ)

DME required.		MISSED APPROACH: Climbing left turn to 3000 direct ROD VORTAC and hold.
AWOS-3 <b>118.075</b>	COLUMBUS APP CON <b>134.45 294.5</b>	UNICOM <b>122.8</b> (CTAF) <b>0</b>



EC-2, 05 SEP 2024 to 03 OCT 2024

EC-2, 05 SEP 2024 to 03 OCT 2024



CATEGORY	A	B	C	D
S-7	1480-1	368 (400-1)		1480-1¼ 368 (400-1¼)
CIRCLING	1540-1 418 (500-1)	1640-1 518 (600-1)	1860-2 738 (800-2)	1980-2¾ 858 (900-2¾)

MIRL Rwy 7-25 **0**  
REIL Rwys 7 and 25 **0**