

APP CRS 228°	Rwy Idg 4300
	TDZE 2864
	Apt Elev 2869

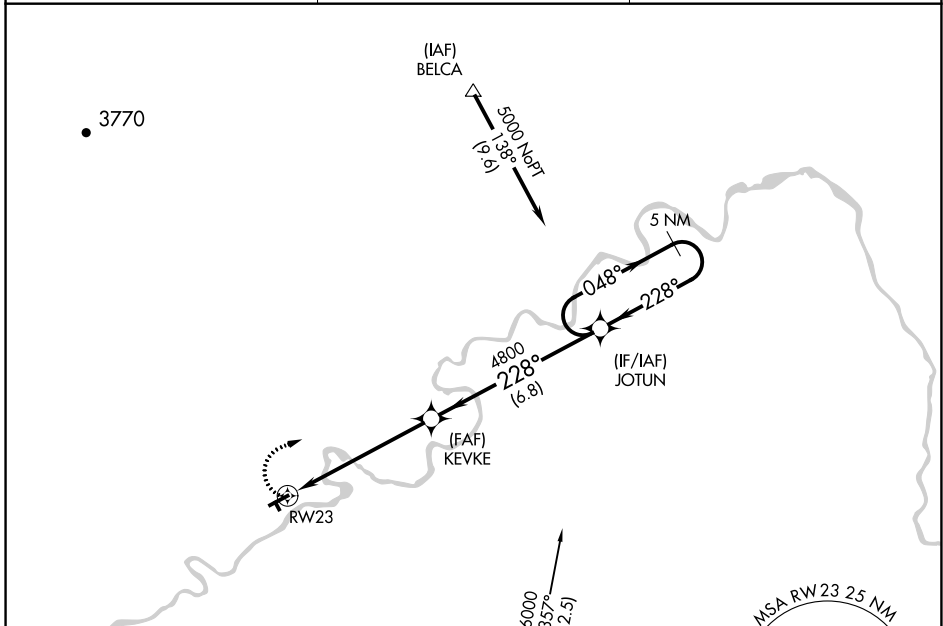
RNAV (GPS) RWY 23

FORT BENTON (79S)

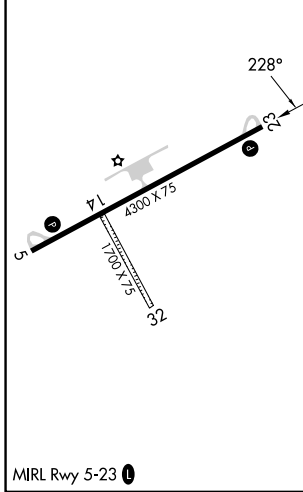
⚠ DME/DME RNP-0.3 NA. Procedure NA at night. When local altimeter setting not received, use Great Falls altimeter setting and increase all MDAs 200 feet and LNAV visibility Cat C ½ SM, and Circling visibility Cat C ¾ SM. Circling NA to Rwy 14-32.

MISSED APPROACH: Climbing right turn to 5000 direct JOTUN and hold.

AWOS-3PT 121.125	SALT LAKE CENTER 133.4 285.4	UNICOM 122.8 (CTAF)
----------------------------	--	-------------------------------



ELEV 2869	TDZE 2864
-----------	-----------



5000	JOTUN	KEVKE	JOTUN	5 NM Holding Pattern
1.4 NM to RWY 23	1.4 NM	4.5 NM	6.8 NM	5000
	1.4	4.5	6.8	
CATEGORY	A	B	C	D
LNAV MDA	3340-1	476 (500-1)	3340-1¼ 476 (500-1¼)	NA
CIRCLING	3340-1	471 (500-1)	3460-1½ 591 (600-1½)	NA

NW-1, 05 SEP 2024 to 03 OCT 2024

NW-1, 05 SEP 2024 to 03 OCT 2024