

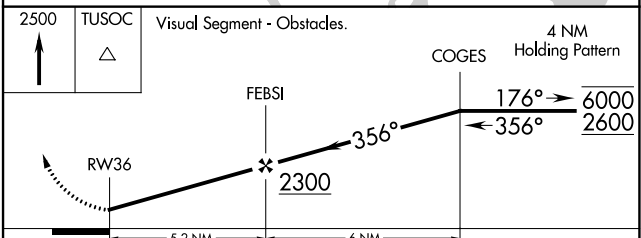
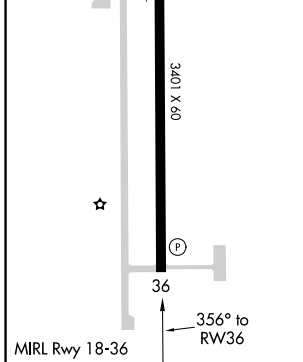
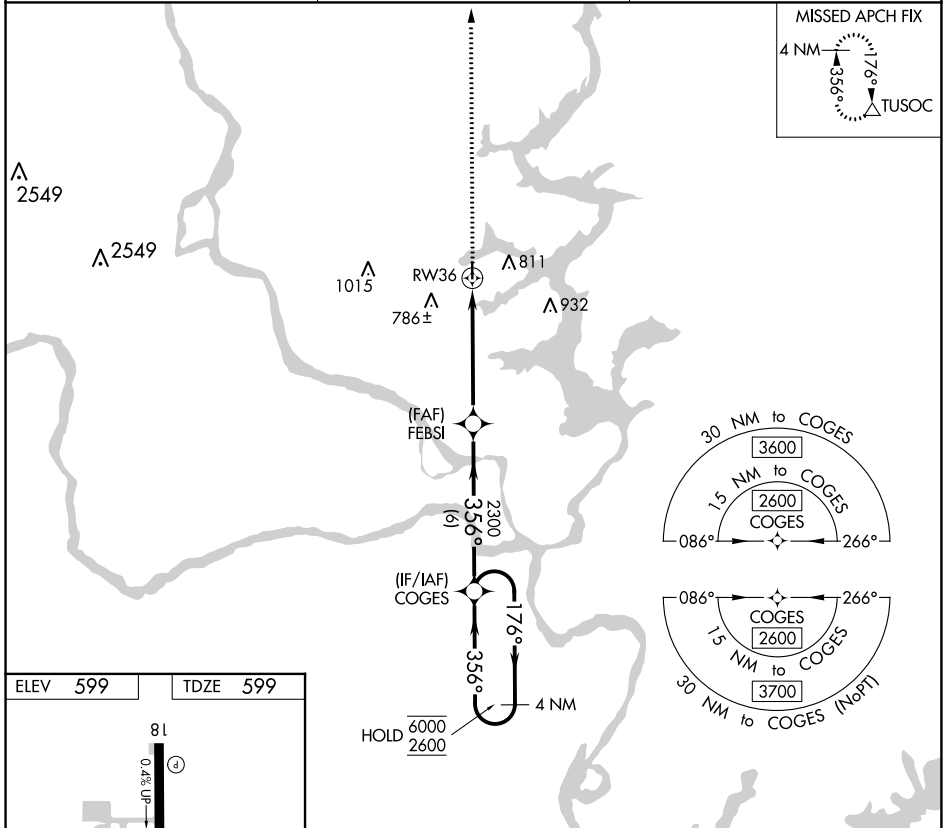
APP CRS 356°	Rwy Idg 3401
	TDZE 599
	Apt Elev 599

RNAV (GPS) RWY 36

HEFNER-EASLEY (H68)

RNP APCH. Procedure NA at night. Helicopter visibility reduction below 1 SM NA. Use Pryor altimeter setting. MISSED APPROACH: Climb to 2500 direct TUSOC and hold.

H71 AWOS-3PT 120.1	TULSA APP CON 119.1 360.825	CTAF 122.9
------------------------------	---------------------------------------	----------------------



CATEGORY	A	B	C	D
LNAV MDA	1140-1	541 (600-1)	NA	
<input checked="" type="checkbox"/> CIRCLING	1160-1	561 (600-1)	NA	

SC-1, 05 SEP 2024 to 03 OCT 2024

SC-1, 05 SEP 2024 to 03 OCT 2024