

WAAS CH 97729 W12A	APP CRS 122°	Rwy Idg TDZE Apt Elev	3900 2252 2264
--	------------------------	-----------------------------	---

RNAV (GPS) RWY 12

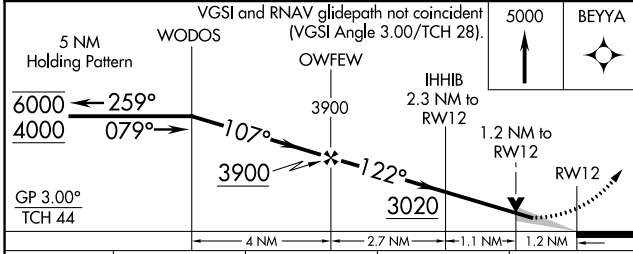
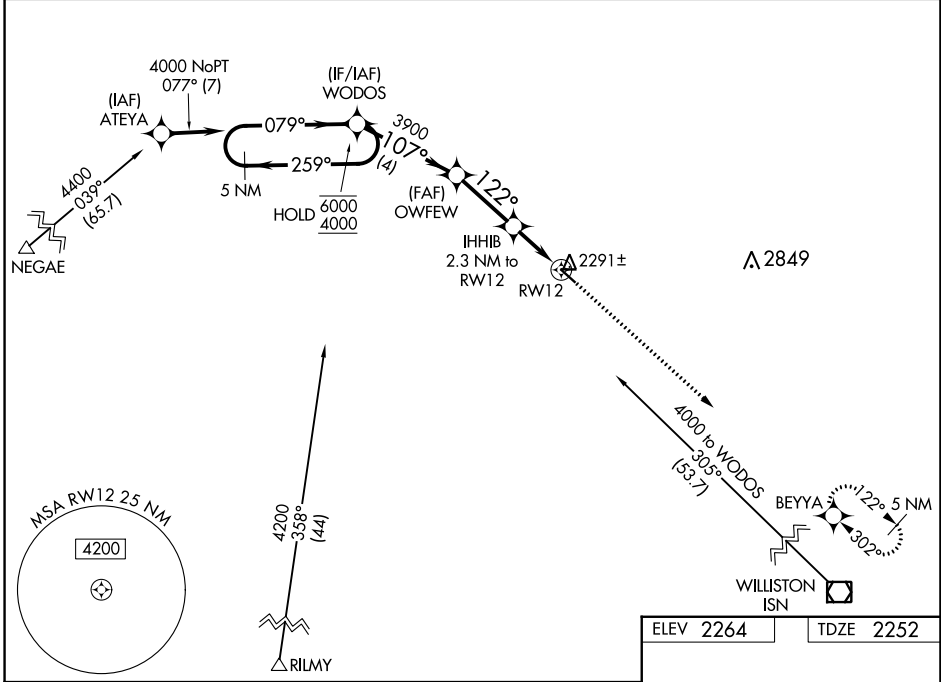
SHER-WOOD (PWD)

RNP APCH-GPS.

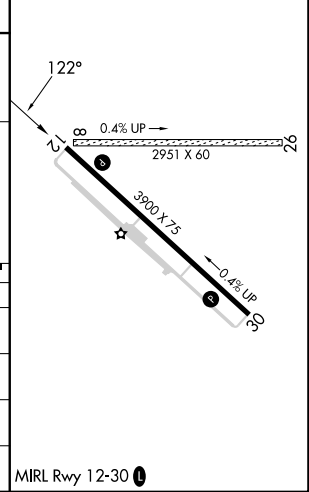
⚠ Circling Rwy 8, 26 NA at night. For uncompensated Baro-VNAV systems, LNAV/VNAV NA below -19°C or above 54°C. When local altimeter setting not received, use Williston altimeter setting.

MISSED APPROACH: Climb to 5000 direct BEYYA and hold.

AWOS-3PT 135.025	SALT LAKE CENTER 126.85 305.2	UNICOM 122.8 (CTAF) 0
----------------------------	---	---------------------------------



ELEV 2264	TDZE 2252
-----------	-----------



CATEGORY	A	B	C	D
LPV DA	2567-7/8		315 (400-7/8)	
LNAV/VNAV DA	2617-1		365 (400-1)	
LNAV MDA	2660-1	408 (400-1)	2660-1 1/8	408 (400-1 1/8)
C CIRCLING	2780-1	516 (600-1)	2880-1 3/4 616 (700-1 3/4)	3100-2 3/4 836 (900-2 3/4)

NW-1, 05 SEP 2024 to 03 OCT 2024

NW-1, 05 SEP 2024 to 03 OCT 2024