

WAAS CH 49238 W31A	APP CRS 314°	Rwy ldg 4201 TDZE 1315 Apt Elev 1318
--	------------------------	---

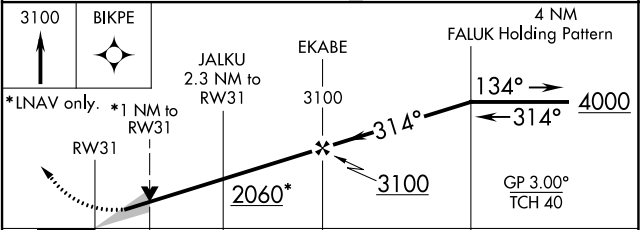
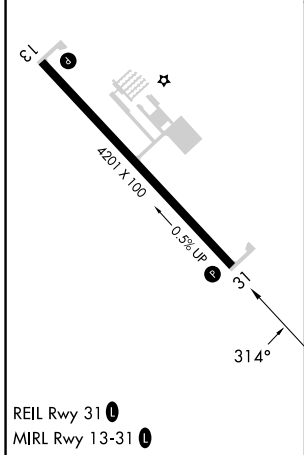
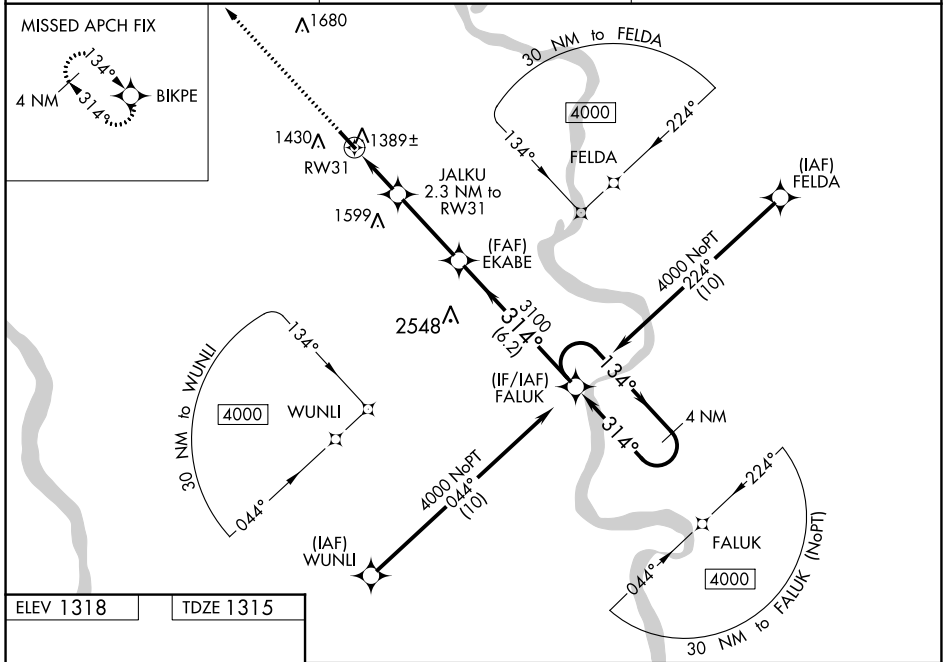
RNAV (GPS) RWY 31

BLAIR EXEC (BTA)

⚠ For uncompensated Baro-VNAV systems, LNAV/VNAV NA below -17°C (2°F) or above 54°C (130°F). Baro-VNAV and VDP NA when using Eppley Airfield altimeter setting. DME/DME RNP-0.3 NA. When local altimeter setting not received, use Eppley Airfield altimeter setting and increase LPV and LNAV/VNAV DA to 1638 and visibility to 1½ mile all Cats, increase all MDA 80 feet and LNAV Cat C visibility to 1½ mile.

MISSED APPROACH: Climb to 3100 direct BIKPE and hold.

AWOS-3 120.225	OMAHA APP CON 120.1 354.05	UNICOM 123.05 (CTAF) 0
--------------------------	--------------------------------------	----------------------------------



CATEGORY	A	B	C	D
LPV DA	1564-7/8	250 (300-7/8)		NA
LNAV/VNAV DA	1564-7/8	250 (300-7/8)		NA
LNAV MDA	1640-1	326 (400-1)		NA
C CIRCLING	1740-1 422 (500-1)	1780-1 462 (500-1)	1780-1½ 462 (500-1½)	NA

NC-2, 05 SEP 2024 to 03 OCT 2024

NC-2, 05 SEP 2024 to 03 OCT 2024