

RED CLOUD, NEBRASKA

AL-10380 (FAA)

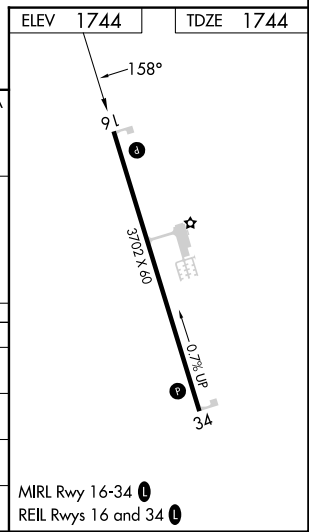
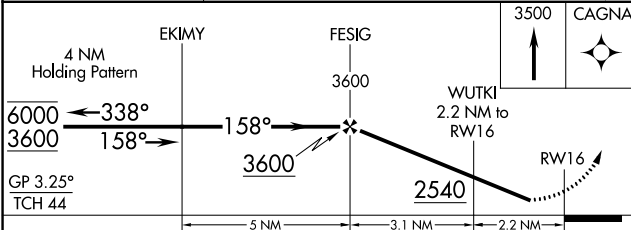
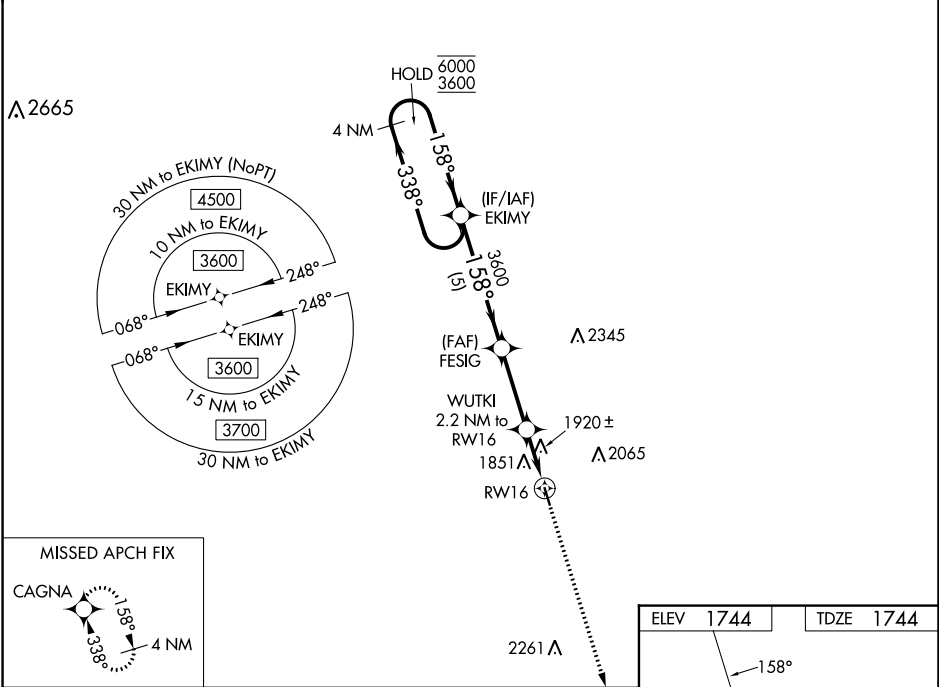
24249

WAAS CH 82027 W16A	APP CRS 158°	Rwy Idg TDZE Apt Elev	3702 1744 1744
--	------------------------	-----------------------------	---

RNAV (GPS) RWY 16

RED CLOUD MUNI (7V7)

RNP APCH - GPS.		MISSED APPROACH: Climb to 3500 direct CAGNA and hold.
<p>▼ Baro-VNAV NA. Rwy 16 helicopter visibility reduction below 3/4 SM NA.</p> <p>▲ NA Use K82 altimeter setting; when not received, use HSI altimeter setting and increase LPV DA to 2120 feet; increase LNAV/VNAV DA to 2290 feet and all visibilities 1/2 SM. Increase all MDAs 60 feet.</p>		
K82 AWOS-3PT 118.45	MINNEAPOLIS CENTER 119.4 278.8	CTAF 122.9 0



CATEGORY	A	B	C	D
LPV DA	2075-1	331 (400-1)		NA
LNAV/VNAV DA	2245-1 3/8	501 (600-1 3/8)		NA
LNAV MDA	2240-1	496 (500-1)		NA
CIRCLING	2280-1 536 (600-1)	2300-1 556 (600-1)		NA

RED CLOUD, NEBRASKA
Amdt 1 05SEP24

40°05'N-98°32'W

RED CLOUD MUNI (7V7)

RNAV (GPS) RWY 16

NC-2, 05 SEP 2024 to 03 OCT 2024

NC-2, 05 SEP 2024 to 03 OCT 2024