

APP CRS 343°	Rwy Idg TDZE Apt Elev	N/A N/A 35
------------------------	-----------------------------	---------------------------------------

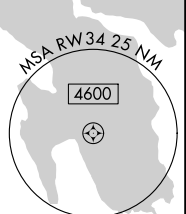
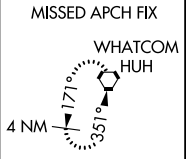
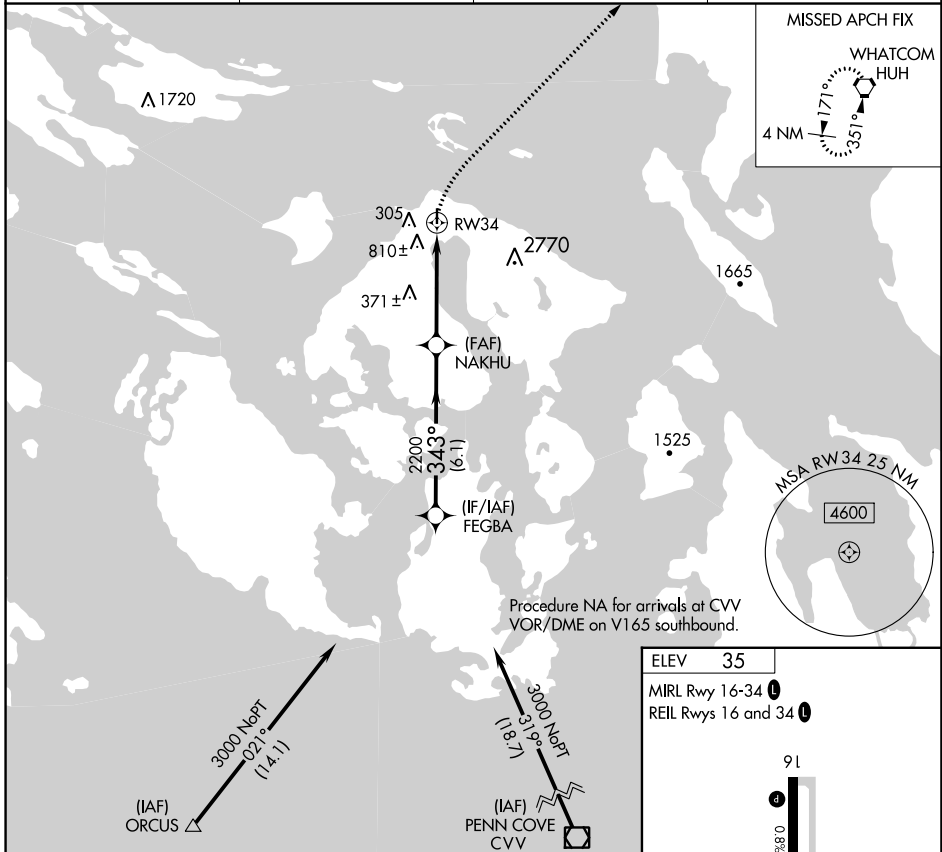
RNAV (GPS)-A

ORCAS ISLAND (ORS)

▼ DME/DME RNP-0.3 NA. Helicopter visibility reduction below 1 SM NA.
▲ When local altimeter setting not received, use Friday Harbor altimeter setting and increase MDA 40 feet. Night landing: Rwy 34 NA.

MISSED APPROACH: Climbing right turn to 2000 direct HUH VORTAC and hold.

AWOS-3P 135.425	WHIBBEY APP CON 118.2 285.65 (SOUTH)	VICTORIA APP CON 132.7 290.8 (NORTH)	CTAF 128.25 0
---------------------------	--	--	-------------------------



ELEV	35
MIRL Rwy 16-34	0
REIL Rws 16 and 34	0



FEGBA	VGSi and descent angles not coincident (VGSi Angle 4.00/TCH 42).		2000	HUH
3000	343°	NAKHU	2200	
		4.56°		
		TCH 40		
	6.1 NM		4.4 NM	
CATEGORY	A	B	C	D
C CIRCLING	1120-1¼ 1085 (1100-1¼)	1820-1½ 1785 (1800-1½)	NA	

NW-1, 05 SEP 2024 to 03 OCT 2024

NW-1, 05 SEP 2024 to 03 OCT 2024