

WAAS CH <b>61324</b> <b>W23A</b>	APP CRS <b>226°</b>	Rwy Idg TDZE Apt Elev	<b>5002</b> <b>411</b> <b>411</b>
--	------------------------	-----------------------------	---

# RNAV (GPS) RWY 23

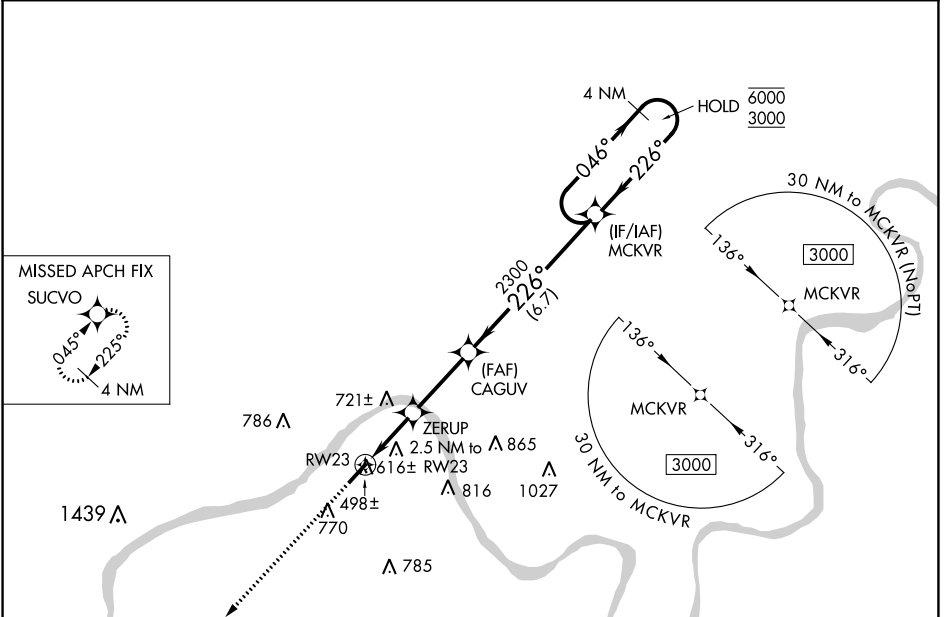
HANCOCK COUNTY/RON LEWIS FLD (KY8)

RNP APCH - GPS.

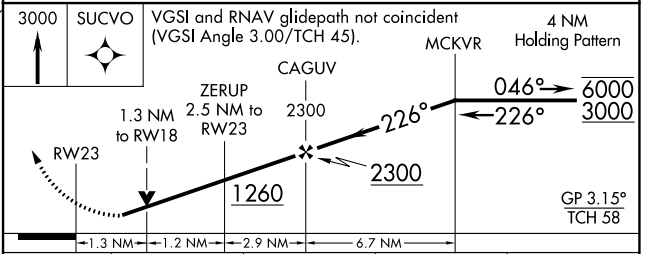
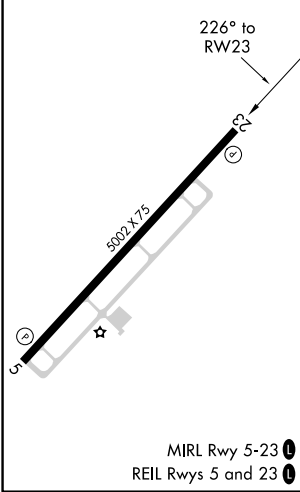
**⚠** Rwy 23 helicopter visibility reduction below 3/4 SM NA. For uncompensated Baro-VNAV systems, LNAV/VNAV NA below -15°C or above 54°C.

**MISSED APPROACH:**  
Climb to 3000 direct SUCVO and hold.

AWOS-3 <b>119.775</b>	EVANSVILLE APP CON ★ <b>124.025 290.9</b>	UNICOM <b>123.0 (CTAF) 0</b>
--------------------------	--	---------------------------------



ELEV 411	TDZE 411
----------	----------



CATEGORY	A	B	C	D
LPV DA	834-1 1/4	423 (500-1 1/4)		NA
LNAV/VNAV DA	880-1 3/8	469 (500-1 3/8)		NA
LNAV MDA	880-1	469 (500-1)	880-1 3/8 469 (500-1 3/8)	NA
<b>CIRCLING</b>	960-1 549 (600-1)	1080-1 669 (700-1)	1160-2 1/4 749 (800-2 1/4)	NA

SE-1, 05 SEP 2024 to 03 OCT 2024

SE-1, 05 SEP 2024 to 03 OCT 2024