

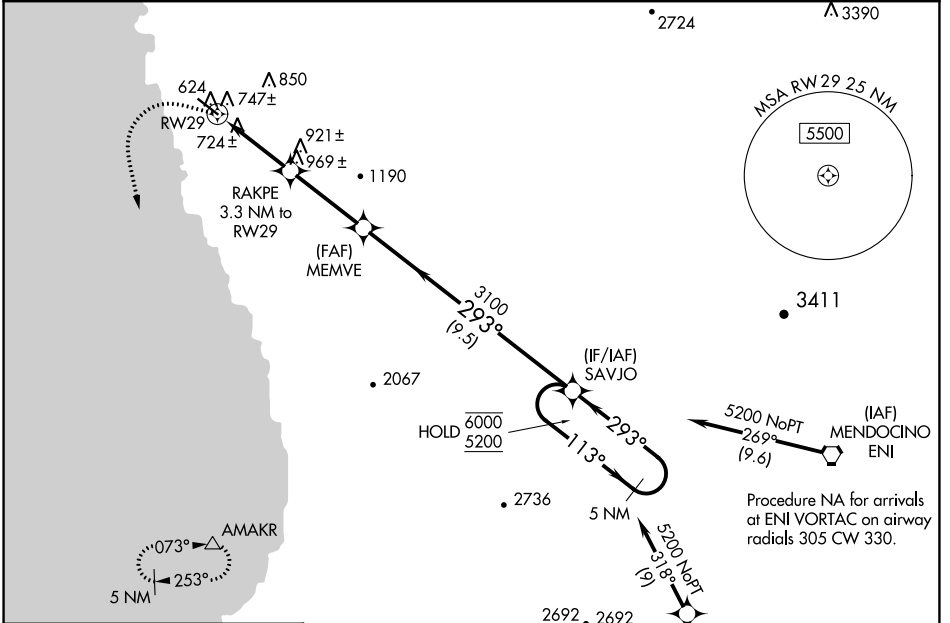
WAAS CH <b>77829</b> <b>W29A</b>	APP CRS <b>293°</b>	Rwy Idg TDZE Apt Elev	<b>5249</b> <b>574</b> <b>574</b>
--	------------------------	-----------------------------	---

# RNAV (GPS) RWY 29

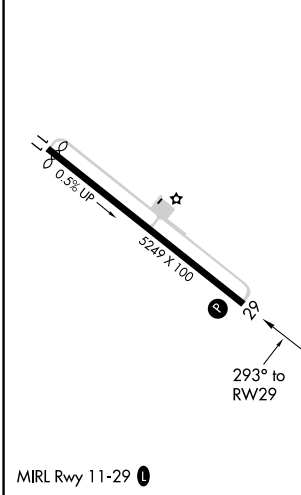
LITTLE RIVER (LLR)

RNP APCH.	MISSED APPROACH: Climbing left turn to 6000 direct AMAKR and hold, continue climb-in-hold to 6000.
<p>◀ Circling NA northeast of Rwy 11-29.</p> <p>⚠ Procedure NA at night.</p> <p>⚠ Rwy 29 helicopter visibility reduction below 1 SM NA.</p>	

AWOS-AV <b>121.125</b>	OAKLAND CENTER <b>132.2 350.3</b>	AUNICOM <b>122.7 (CTAF) 0</b>
---------------------------	--------------------------------------	----------------------------------



ELEV 574	TDZE 574
----------	----------



6000	AMAKR	VGSI and descent angles not coincident (VGSI Angle 3.50/TCH 42).	5 NM	SAVJO	Holding Pattern
1860	RAKPE	3.3 NM to RWY 29	3100	MEMVE	113° → 6000 ← 293° 5200
3.3 NM	3.3 NM	9.5 NM			
CATEGORY	A	B	C	D	
LP MDA	980-1	406 (500-1)	980-1½	406 (500-1½)	
LNAV MDA	1000-1	426 (500-1)	1000-1¼	426 (500-1¼)	
CIRCLING	1040-1	466 (500-1)	1080-1½ 506 (600-1½)	1400-2¾ 826 (900-2¾)	

SW-2, 05 SEP 2024 to 03 OCT 2024

SW-2, 05 SEP 2024 to 03 OCT 2024