

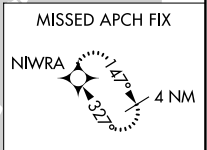
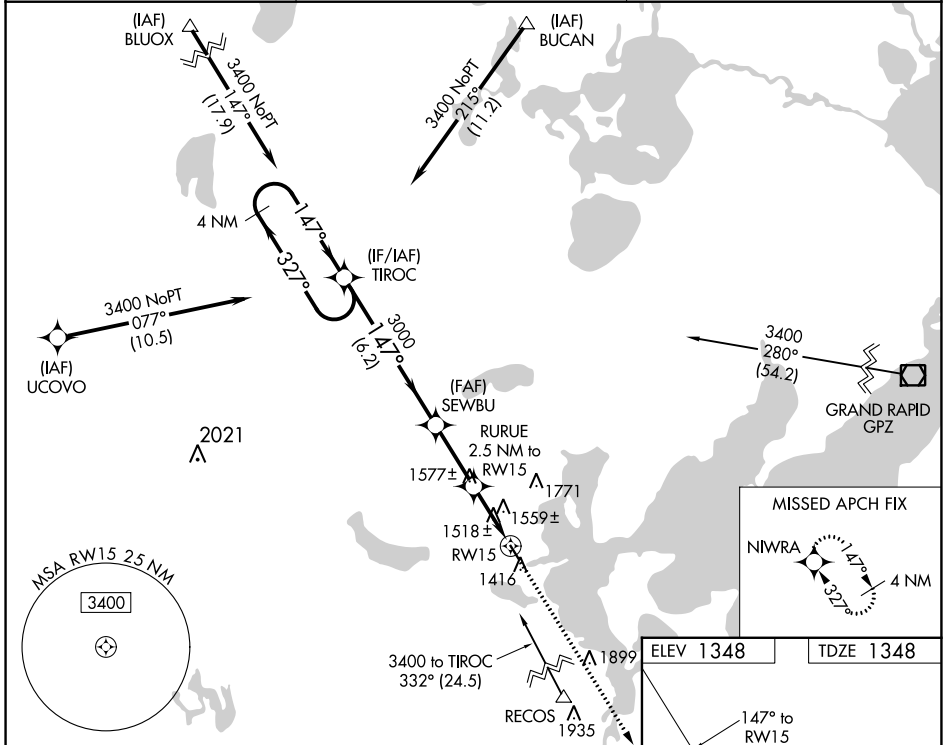
WAAS CH <b>73034</b> <b>W15A</b>	APP CRS <b>147°</b>	Rwy ldg TDZE Apt Elev	<b>3220</b> <b>1348</b> <b>1348</b>
--	------------------------	-----------------------------	---

# RNAV (GPS) RWY 15

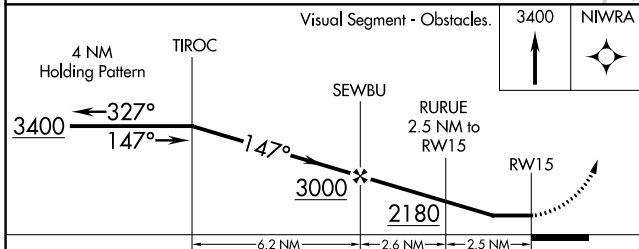
WALKER MUNI (Y49)

RNP APCH.	When local altimeter not received, use Longville altimeter setting and increase all MDA 60 feet; increase LP and LNAV Cat C visibility 1/8 SM and Circling Cat C visibility 1/4 SM. Procedure NA at night. Rwy 15 helicopter visibility reduction below 1 SM NA.	MISSED APPROACH: Climb to 3400 direct NIWRA and hold.
-----------	--	---

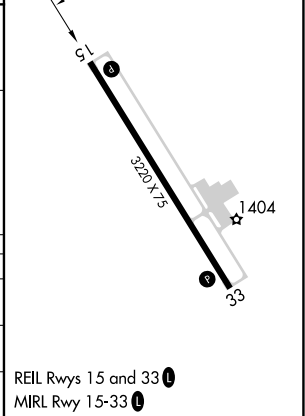
AWOS-3PT <b>119.0</b>	MINNEAPOLIS CENTER <b>134.75 251.1</b>	CTAF <b>122.90</b>
--------------------------	---	-----------------------



ELEV 1348	TDZE 1348
-----------	-----------



CATEGORY	A	B	C	D
LP MDA	1780-1	432 (500-1)	1780-1 1/4 432 (500-1 1/4)	NA
LNAV MDA	1820-1	472 (500-1)	1820-1 3/8 472 (500-1 3/8)	NA
<b>C</b> CIRCLING	1860-1	512 (600-1)	2140-2 1/4 792 (800-2 1/4)	NA



NC-1, 05 SEP 2024 to 03 OCT 2024

NC-1, 05 SEP 2024 to 03 OCT 2024