

WAAS CH 49231 W14A	APP CRS 138°	Rwy Idg 3401 TDZE 1206 Apt Elev 1206
--	------------------------	---

RNAV (GPS) RWY 14

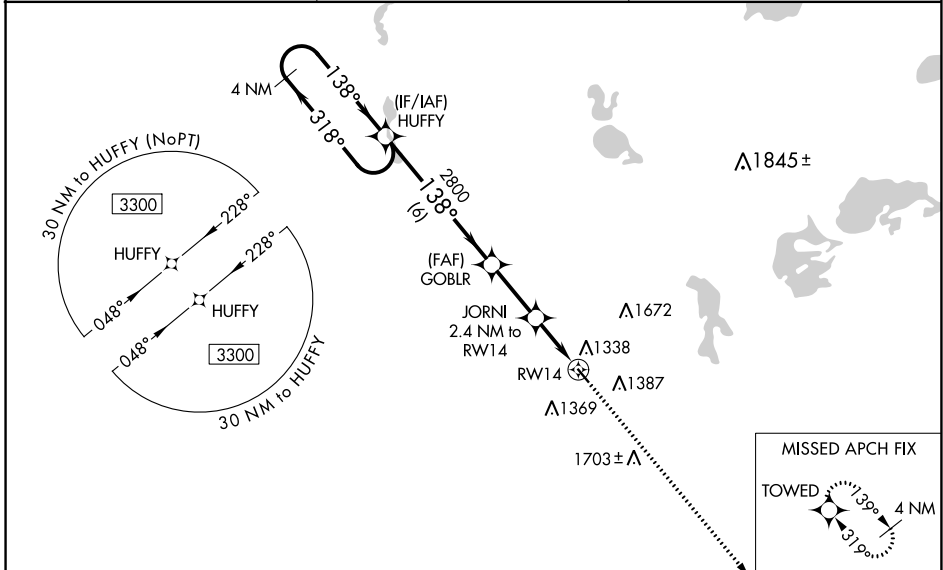
ELBOW LAKE MUNI/PRIDE OF THE PRAIRIE (Y63)

RNP APCH-GPS.

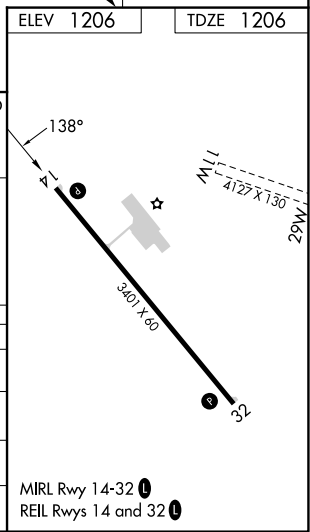
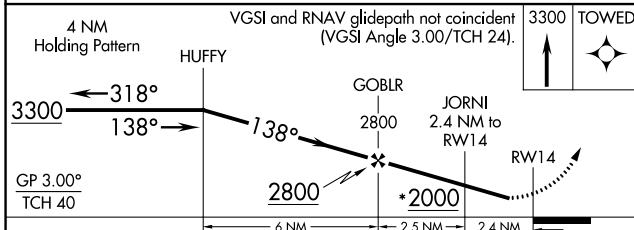
⚠️ Baro-VNAV NA when using Fergus Falls altimeter setting. For uncompensated Baro-VNAV systems LNAV/VNAV NA below -17°C or above 54°C. Circling NA northeast of Rwy 14-32. Procedure NA at night. Rwy 14 helicopter visibility reduction below ¼ SM NA. When local altimeter setting not received, use Fergus Falls altimeter setting: increase LPV DA to 1504 feet; increase LNAV/VNAV DA to 1605 feet and visibility all Cats ¼ mile; increase all MDAs 60 feet. Circling NA to Rwys 11W and 29W.

MISSED APPROACH:
Climb to 3300 direct TOWED and hold.

AWOS-3 118.075	MINNEAPOLIS CENTER 126.1 269.2	CTAF 122.9
--------------------------	--	----------------------



ELEV 1206	TDZE 1206
-----------	-----------



CATEGORY	A	B	C	D
LPV DA	1456-1	250 (300-1)		NA
LNAV/VNAV DA	1557-1½	351 (400-1½)		NA
LNAV MDA	1600-1	394 (400-1)		NA
CIRCLING	1600-1 394 (400-1)	1680-1 474 (500-1)		NA

NC-1, 05 SEP 2024 to 03 OCT 2024

NC-1, 05 SEP 2024 to 03 OCT 2024