

|             |          |             |
|-------------|----------|-------------|
| APP CRS     | Rwy Idg  | <b>3600</b> |
| <b>150°</b> | TDZE     | <b>1417</b> |
|             | Apt Elev | <b>1418</b> |

# RNAV (GPS) RWY 15

PARKSTON MUNI (8V3)

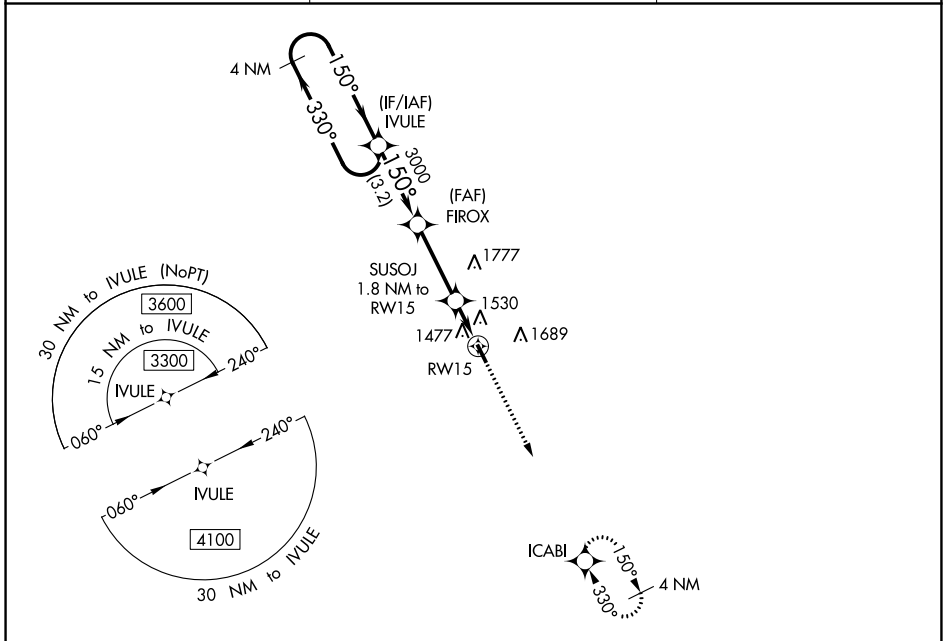
**NA** DME/DME RNP-0.3 NA. Use Mitchell altimeter setting; when not received, use Yankton altimeter setting and increase all MDA 40 feet. Helicopter visibility reduction below 3/4 SM not authorized.

MISSED APPROACH: Climb to 3300 direct ICABI and hold.

MHE ASOS  
**124.175**

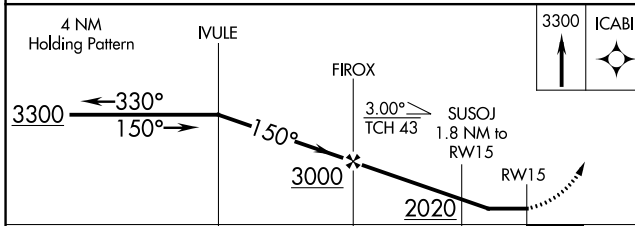
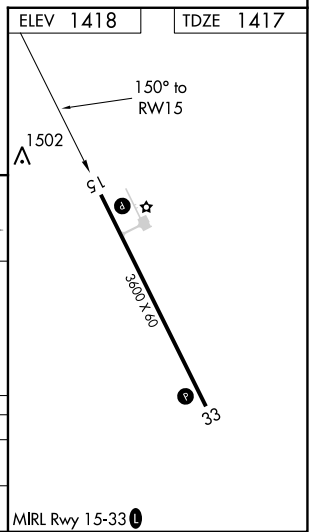
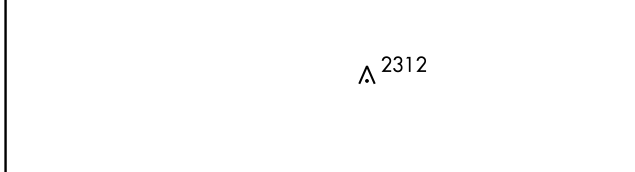
MINNEAPOLIS CENTER  
**128.0 385.5**

AUNICOM  
**122.9 (CTAF)**



NC-1, 05 SEP 2024 to 03 OCT 2024

NC-1, 05 SEP 2024 to 03 OCT 2024



| CATEGORY | A                     | B                     | C | D  |
|----------|-----------------------|-----------------------|---|----|
| LNVA MDA | 1860-1                | 443 (500-1)           |   | NA |
| CIRCLING | 1980-1<br>562 (600-1) | 2060-1<br>642 (700-1) |   | NA |