

WAAS CH <b>97735</b> <b>W18A</b>	APP CRS <b>182°</b>	Rwy Idg TDZE Apt Elev	<b>4000</b> <b>936</b> <b>936</b>
--	------------------------	-----------------------------	---

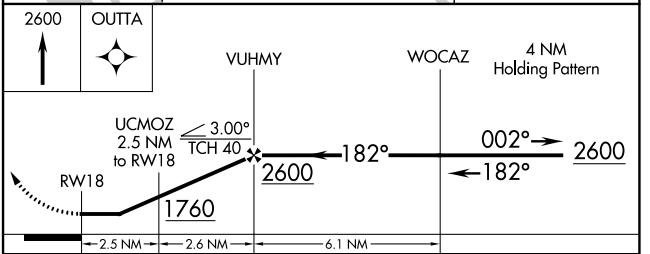
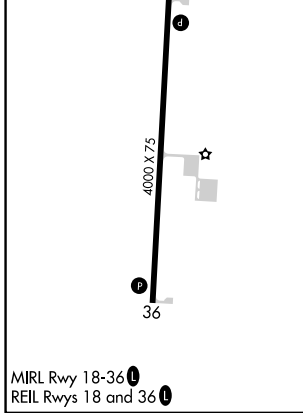
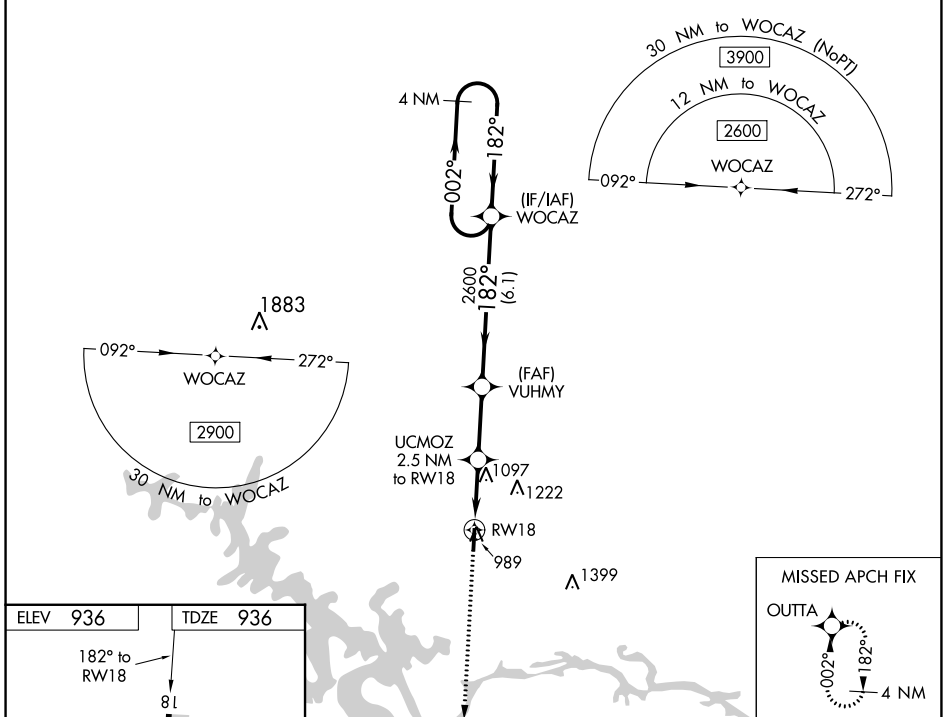
# RNAV (GPS) RWY 18

WARSAW MUNI (R.A.W)

**NA** DME/DME RNP-0.3 NA. Helicopter visibility reduction below 1 SM NA. When local altimeter setting not received, use Clinton altimeter setting and increase all MDA 60 feet. Increase LP/LNAV Cat C/D visibility to 1 $\frac{3}{8}$  mile, and Circling Cat C/D visibility  $\frac{1}{4}$  mile.

MISSED APPROACH: Climb to 2600 direct OUTTA and hold.

AWOS-3PT <b>118.325</b>	WHITEMAN APP CON * <b>127.45 284.0</b>	CTAF <b>122.9</b>
----------------------------	---	----------------------



CATEGORY		A	B	C	D
LP	MDA	1320-1	384 (400-1)	1320-1 $\frac{1}{8}$	384 (400-1 $\frac{1}{8}$ )
	LNAV MDA	1360-1	424 (500-1)	1360-1 $\frac{1}{4}$	424 (500-1 $\frac{1}{4}$ )
<b>C</b>	CIRCLING	1360-1 424 (500-1)	1400-1 464 (500-1)	1580-1 $\frac{3}{4}$ 644 (700-1 $\frac{3}{4}$ )	1580-2 644 (700-2)

NC-3, 05 SEP 2024 to 03 OCT 2024

NC-3, 05 SEP 2024 to 03 OCT 2024