

APP CRS	Rwy Idg	N/A
347°	TDZE	N/A
	Apt Elev	4693

RNAV (GPS)-A

DEER LODGE-CITY-COUNTY (38S)

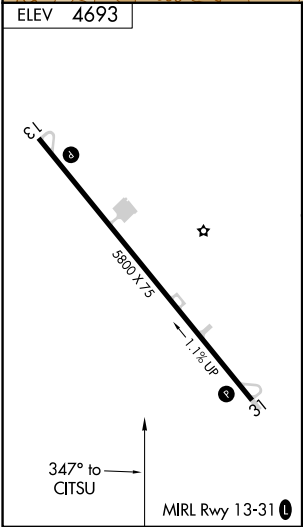
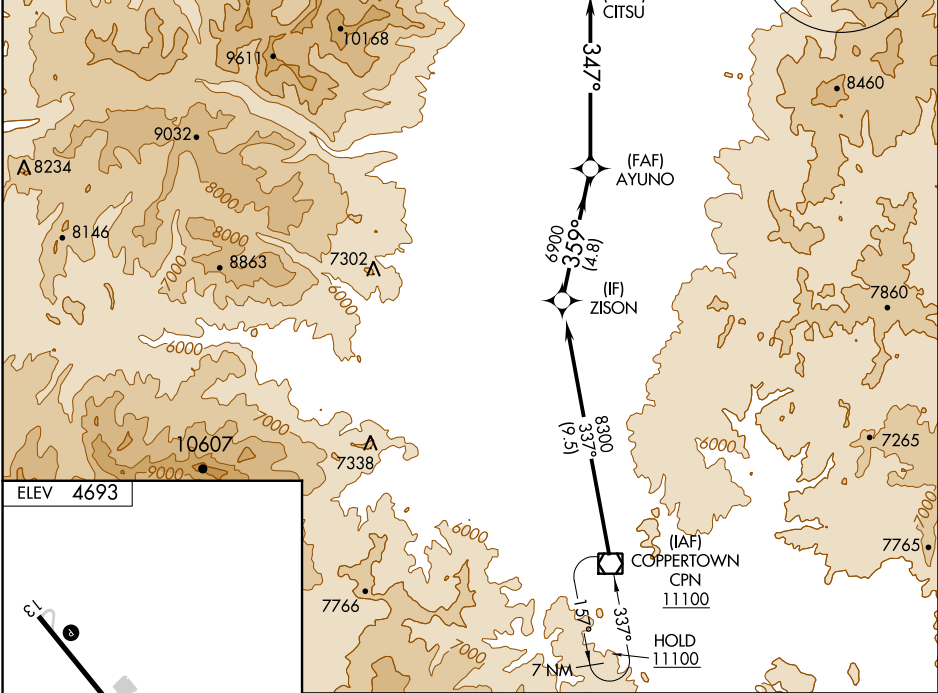
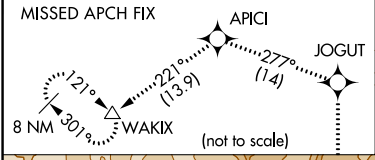
NA
 Circling Rwy 13 NA at night. DME/DME RNP-0.3 NA. Rwy 13 helicopter visibility reduction below 1 SM NA. When local altimeter setting not received use Anaconda altimeter setting and increase all MDA 100 feet; increase Cat B visibility ¼ SM.

MISSED APPROACH: Climb to 13000 direct JOGUT and on track 277° to APICI and on track 221° to WAKIX and hold, continue climb-in-hold to 13000.

AWOS-AV
120.025

SALT LAKE CENTER
133.4 285.4

CTAF
122.90



13000	JOGUT	tr 277°	APICI	tr 221°	WAKIX	ZISON
	CITSU		AYUNO	8300		
	347°		6900	359°		
	6.8 NM		4.8 NM			
CATEGORY	A	B	C	D		
<input checked="" type="checkbox"/> CIRCLING	5440-1 747 (800-1)	5460-1 767 (800-1)	5720-3 1027 (1100-3)	6300-3 1607 (1700-3)		

RNAV (GPS)-A

NW-1, 05 SEP 2024 to 03 OCT 2024

NW-1, 05 SEP 2024 to 03 OCT 2024