

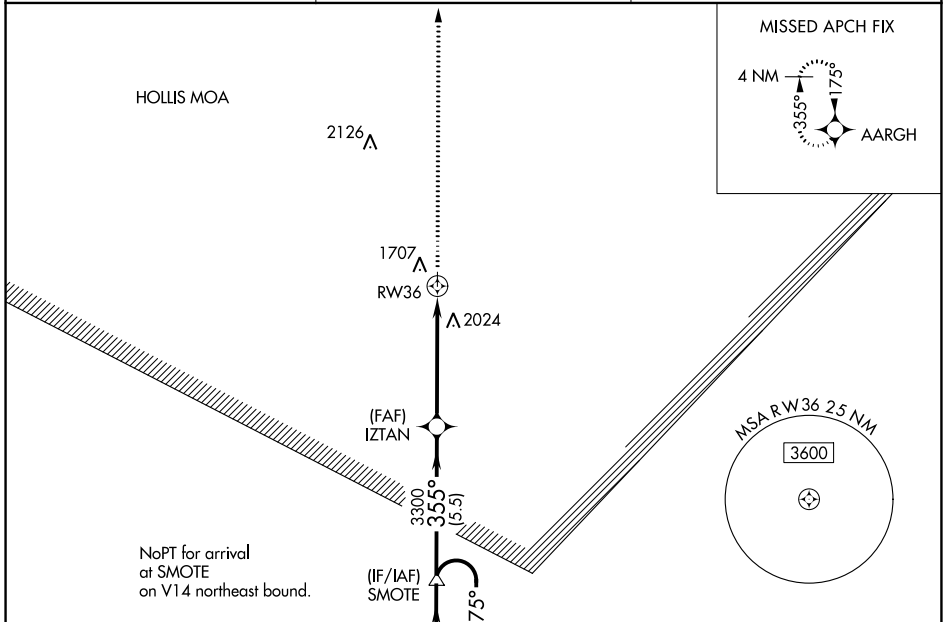
APP CRS	Rwy Idg	3000
355°	TDZE	1659
	Apt Elev	1659

RNAV (GPS) RWY 36

HOLLIS MUNI (O35)

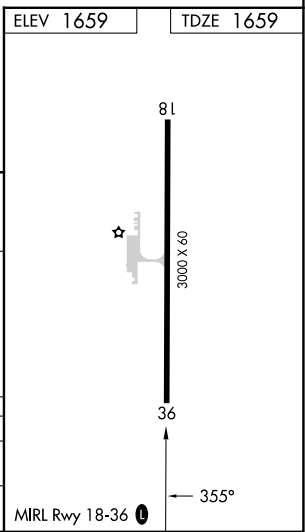
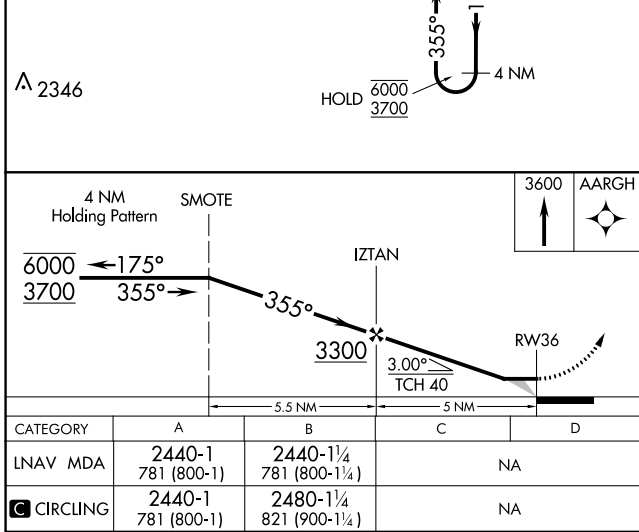
RNP APCH.	MISSED APPROACH: Climb to 3600 direct AARGH and hold.
<p>Circling Rwy 18 NA at night. Use Altus/Quartz Mountain Rgnl altimeter setting.</p>	

AXS AWOS-3PT 118.825	ALTUS APP CON * 125.1 353.7	CTAF 122.9 0
--------------------------------	---------------------------------------	------------------------



SC-1, 05 SEP 2024 to 03 OCT 2024

SC-1, 05 SEP 2024 to 03 OCT 2024



HOLLIS, OKLAHOMA	Orig 19JUL18	34°42'N-99°55'W	HOLLIS MUNI (O35)
------------------	--------------	-----------------	-------------------

RNAV (GPS) RWY 36