

WAAS CH <b>57940</b> <b>W35A</b>	APP CRS <b>351°</b>	Rwy Idg TDZE Apt Elev	<b>5943</b> <b>675</b> <b>693</b>
--	------------------------	-----------------------------	---

# RNAV (GPS) RWY 35

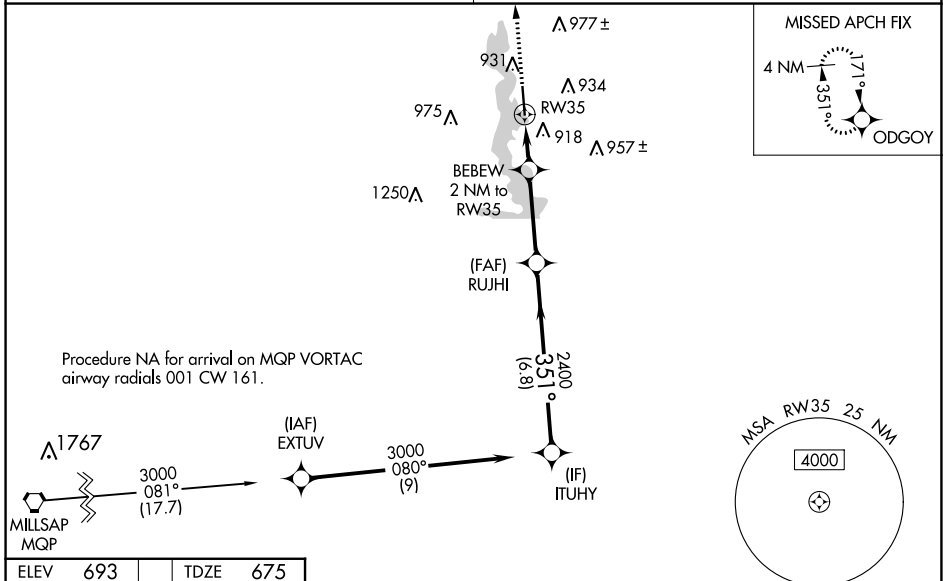
KENNETH COPELAND (4T2)

RNP APCH.

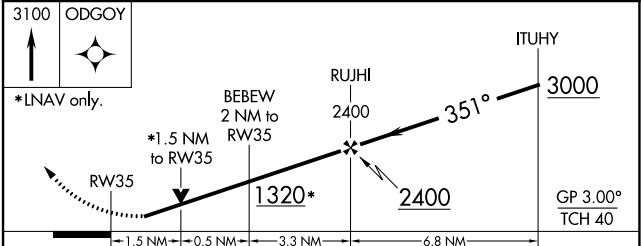
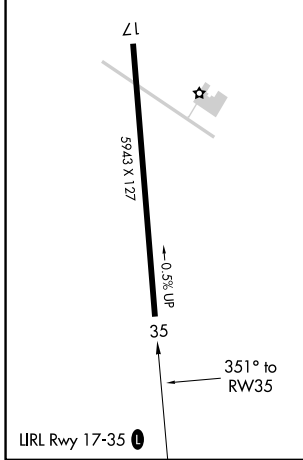
**⚠️** Baro-VNAV and VDP NA when using Fort Worth Meacham Intl altimeter setting. Rwy 35 helicopter visibility reduction below 3/4 SM NA. For uncompensated Baro-VNAV systems, LNAV/VNAV NA below -16°C or above 54°C. Obtain local altimeter setting on CTAF; when not received, use Fort Worth Meacham Intl altimeter setting: Increase LPV DA to 955 feet; increase LNAV/VNAV DA to 1144 feet; increase all MDA 40 feet and LNAV Cat C/D and Circling Cat C visibility 1/4 SM.

MISSED APPROACH:  
Climb to 3100 direct ODGOY and hold.

REGIONAL APP CON <b>125.8 257.95</b>	UNICOM <b>123.075 (CTAF)</b>
---	---------------------------------



ELEV 693	TDZE 675
----------	----------



CATEGORY	A	B	C	D
LPV DA	925-1 250 (300-1)			
LNAV/VNAV DA	1114-1 1/2 439 (500-1 1/2)			
LNAV MDA	1180-1 505 (500-1)	1180-1 3/8 505 (500-1 3/8)		
CIRCLING	1240-1 547 (600-1)	1340-1 3/4 647 (700-1 3/4)	1440-2 1/2 747 (800-2 1/2)	

SC-2, 05 SEP 2024 to 03 OCT 2024

SC-2, 05 SEP 2024 to 03 OCT 2024