

WAAS CH 65832 W18A	APP CRS 182°	Rwy Idg TDZE 239 Apt Elev 239	5003
--	------------------------	---	-------------

RNAV (GPS) RWY 18

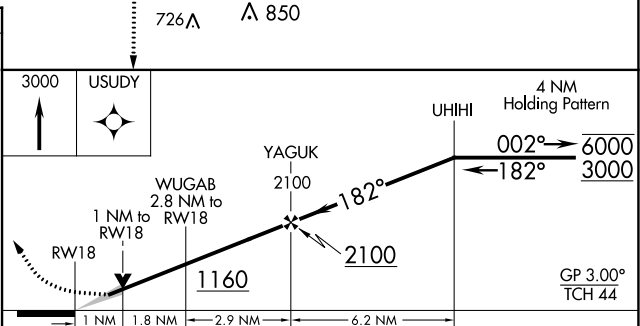
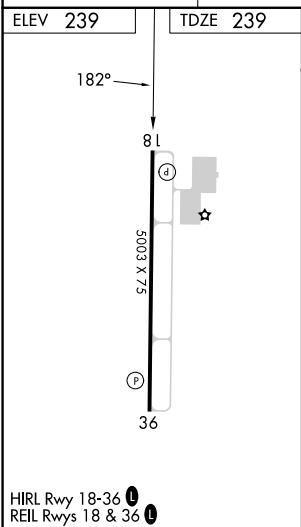
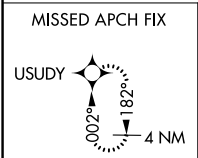
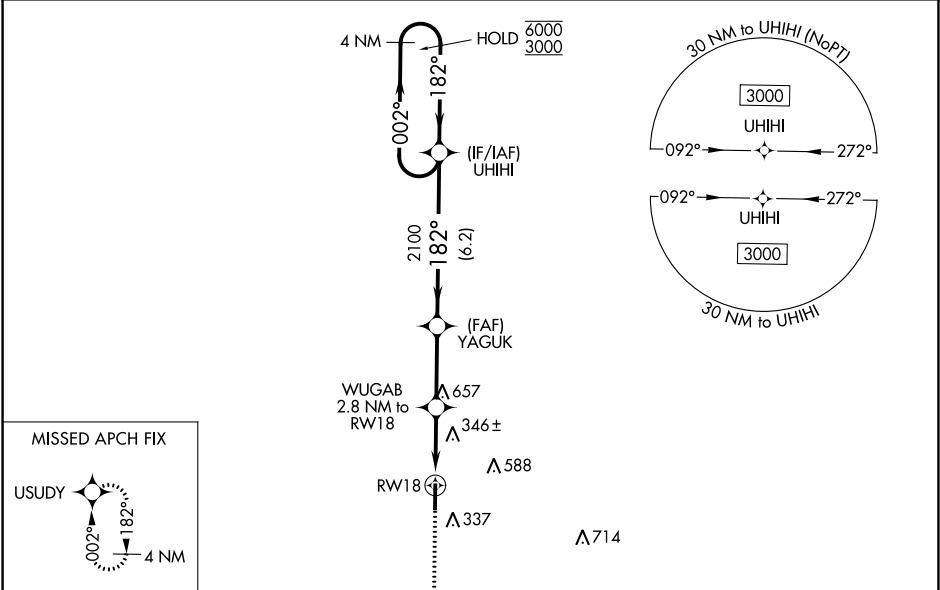
DELTA RGNL (DRP)

RNP APCH - GPS.

⚠ Baro-VNAV and VDP NA when using West Memphis altimeter setting. For uncompensated Baro-VNAV systems, LNAV/VNAV NA below -15°C or above 54°C. When local altimeter setting not received, use West Memphis altimeter setting; increase LPV DA to 507 feet and all visibilities $\frac{1}{8}$ SM; increase LNAV/VNAV DA to 668 feet and all visibilities $\frac{1}{4}$ SM; increase all MDAs 80 feet.

MISSED APPROACH: Climb to 3000 direct USUDY and hold, continue climb-in-hold to 3000.

AWOS-3P 120.0	MEMPHIS CENTER 135.3 335.8	UNICOM 123.0 (CTAF)
-------------------------	--------------------------------------	-------------------------------



CATEGORY	A	B	C	D
LPV DA	439- $\frac{3}{4}$	200 (200- $\frac{3}{4}$)		NA
LNAV/VNAV DA	600-1	361 (400-1)		NA
LNAV MDA	600-1	361 (400-1)		NA
C CIRCLING	760-1	521 (600-1)		NA

SC-1, 05 SEP 2024 to 03 OCT 2024

SC-1, 05 SEP 2024 to 03 OCT 2024