

WAAS CH <b>56535</b> <b>W30A</b>	APP CRS <b>301°</b>	Rwy Idg <b>3802</b> TDZE <b>129</b> Apt Elev <b>166</b>
--	------------------------	---

# RNAV (GPS) RWY 30

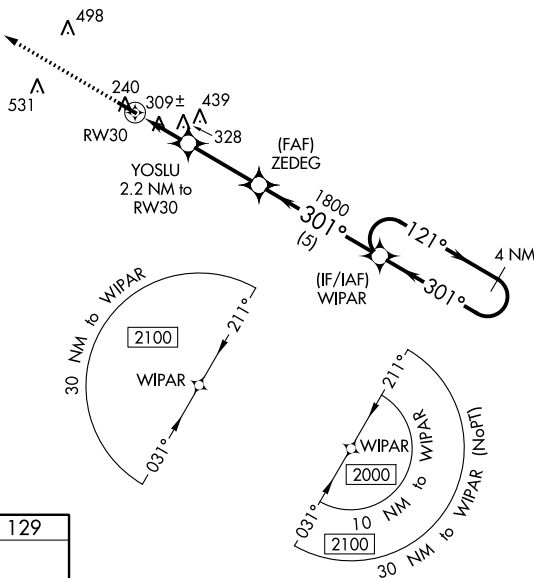
ROY WILCOX (5R.1)

**⚠** DME/DME RNP-0.3 NA. Procedure NA at night. Rwy 30 helicopter visibility reduction below 1 SM NA. Use Mobile Rgnl altimeter setting; when not received, use Hattiesburg Bobby L Chain Muni altimeter setting and increase all MDA 20 feet; increase LNAV Cat C visibility 1/8 SM.

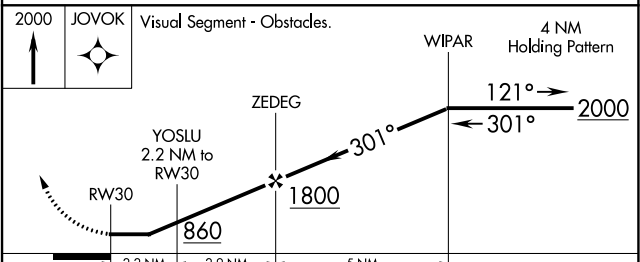
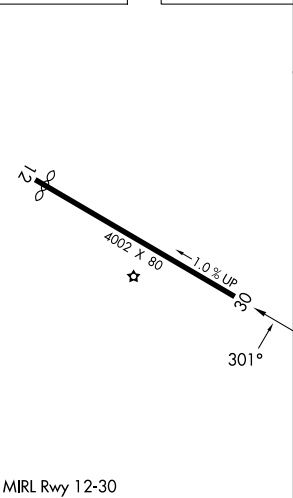
**⚠ NA** MISSED APPROACH: Climb to 2000 direct JOVOK and hold.

MOB ASOS <b>124.75 257.85</b>	HOUSTON CENTER <b>127.65 285.475</b>	UNICOM <b>122.8 (CTAF)</b>
----------------------------------	---	-------------------------------

△ 921



ELEV 166	TDZE 129
----------	----------



CATEGORY	A	B	C	D
LP MDA	680-1	551 (600-1)	680-1 5/8 551 (600-1 5/8)	NA
LNAV MDA	700-1	571 (600-1)	700-1 5/8 571 (600-1 5/8)	NA
<b>C</b> CIRCLING	740-1 574 (600-1)	760-1 594 (600-1)	940-2 1/4 774 (800-2 1/4)	NA

SE-4, 05 SEP 2024 to 03 OCT 2024

SE-4, 05 SEP 2024 to 03 OCT 2024