

APP CRS	Rwy Idg	N/A
<b>009°</b>	TDZE	N/A
	Apt Elev	<b>106</b>

# RNAV (GPS)-A

UMATILLA MUNI (X23)

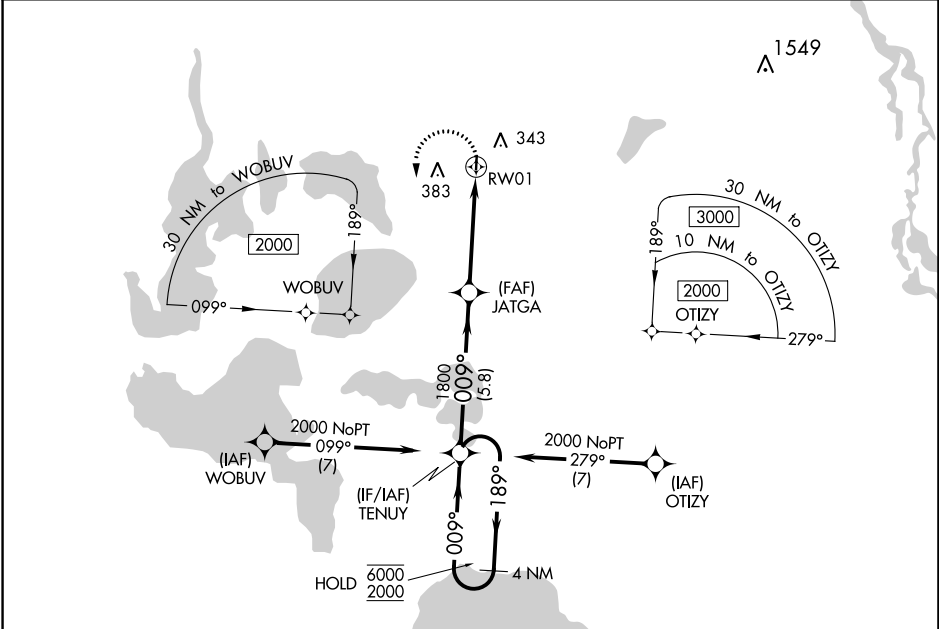
RNP APCH - GPS.

**V** Procedure NA at night. Rwy 01, 19 helicopter visibility reduction below 1 SM NA.

**NA** Use Leesburg altimeter setting.

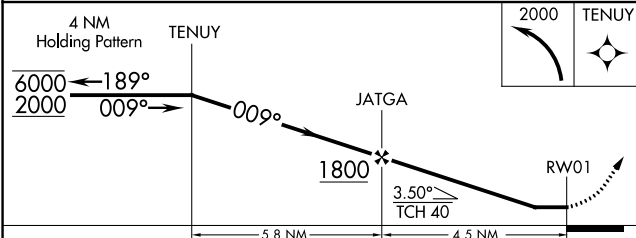
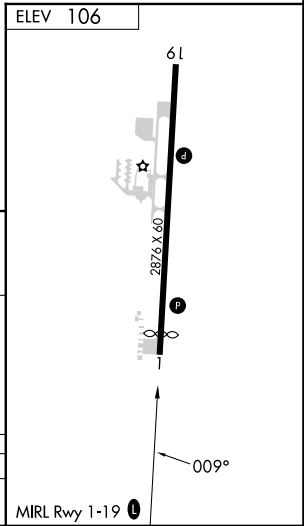
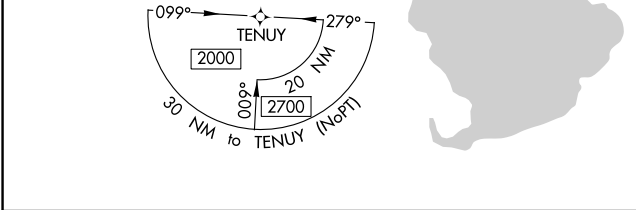
MISSED APPROACH: Climbing left turn to 2000 direct TENUY and hold.

LEE ASOS <b>134.325</b>	ORLANDO APP CON <b>135.3 351.9</b>	CTAF <b>122.9</b>
----------------------------	---------------------------------------	----------------------



SE-3, 05 SEP 2024 to 03 OCT 2024

SE-3, 05 SEP 2024 to 03 OCT 2024



CATEGORY	A	B	C	D
<b>C</b> CIRCLING	760-1 654 (700-1)	780-1 674 (700-1)	NA	