

APP CRS	Rwy Idg	N/A
345°	TDZE	N/A
	Apt Elev	320

# RNAV (GPS)-B

POPLARVILLE/PEARL RIVER COUNTY (M13)

RNP APCH-GPS.

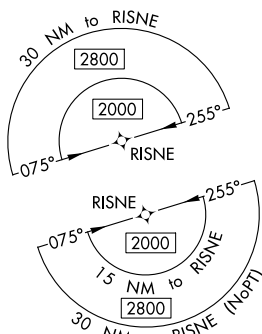
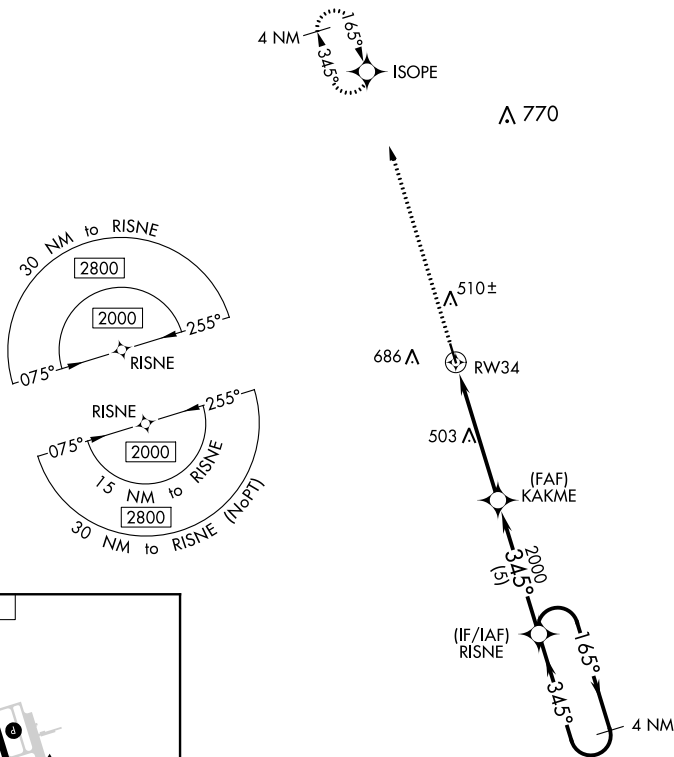
▼ Use Bogalusa altimeter setting; when not received, use Hattiesburg altimeter setting and increase all MDA 40 feet and increase Circling Cat B/C/D visibility ¼ mile. Helicopter visibility reduction below 1 SM NA. Procedure NA at night.

MISSED APPROACH: Climb to 2100 direct ISOPE and hold.

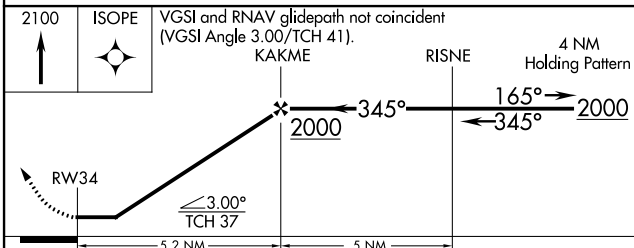
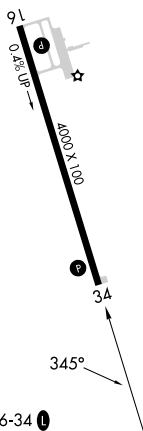
BXA AWOS-3PT  
**118.025**

GULFPORT APP CON ★  
**124.6 354.1**

CTAF  
**122.9 0**



ELEV 320



CATEGORY	A	B	C	D
<b>C</b> CIRCLING	880-1 560 (600-1)	1120-1 800 (800-1)	1120-2¼ 800 (800-2¼)	1120-2½ 800 (800-2½)

SC-4, 05 SEP 2024 to 03 OCT 2024

SC-4, 05 SEP 2024 to 03 OCT 2024