

WIGGINS, MISSISSIPPI

AL-11572 (FAA)

22251

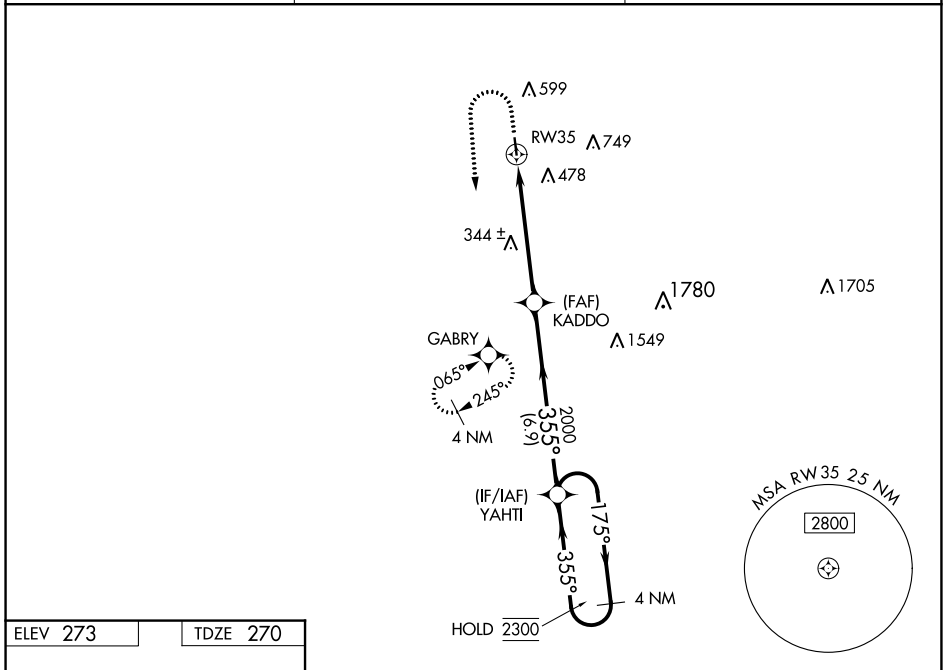
WAAS CH <b>86643</b> <b>W35A</b>	APP CRS <b>355°</b>	Rwy Idg TDZE Apt Elev	<b>3500</b> <b>270</b> <b>273</b>
--	------------------------	-----------------------------	---

# RNAV (GPS) RWY 35

DEAN GRIFFIN MEML (M24)

RNP APCH - GPS.	MISSED APPROACH: Climb to 800 then climbing left turn to 3000 direct GABRY and hold, continue climb-in-hold to 3000.
<p><b>▼</b> Rwy 35 helicopter visibility reduction below 3/4 SM NA. Baro-VNAV NA.</p> <p><b>▲</b> NA Use Hattiesburg Bobby L Chain Muni altimeter setting.</p>	

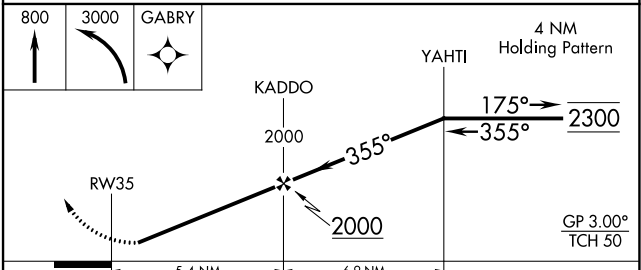
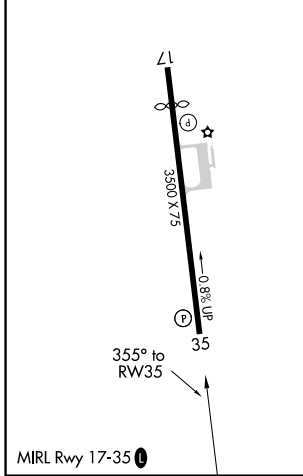
HBG ASOS <b>135.425</b>	GULFPORT APP CON * <b>127.5 254.25</b>	UNICOM <b>122.8 (CTAF) 0</b>
----------------------------	---	---------------------------------



SC-4, 05 SEP 2024 to 03 OCT 2024

SC-4, 05 SEP 2024 to 03 OCT 2024

ELEV 273	TDZE 270
----------	----------



CATEGORY	A	B	C	D
LPV DA	597-1	327 (400-1)		NA
LNAV/VNAV DA	597-1	327 (400-1)		NA
LNAV MDA	680-1	410 (500-1)		NA
<b>C</b> CIRCLING	760-1 487 (500-1)	1040-1 767 (800-1)		NA

WIGGINS, MISSISSIPPI  
Orig 08SEP22

30°51'N-89°10'W

# RNAV (GPS) RWY 35

DEAN GRIFFIN MEML (M24)