

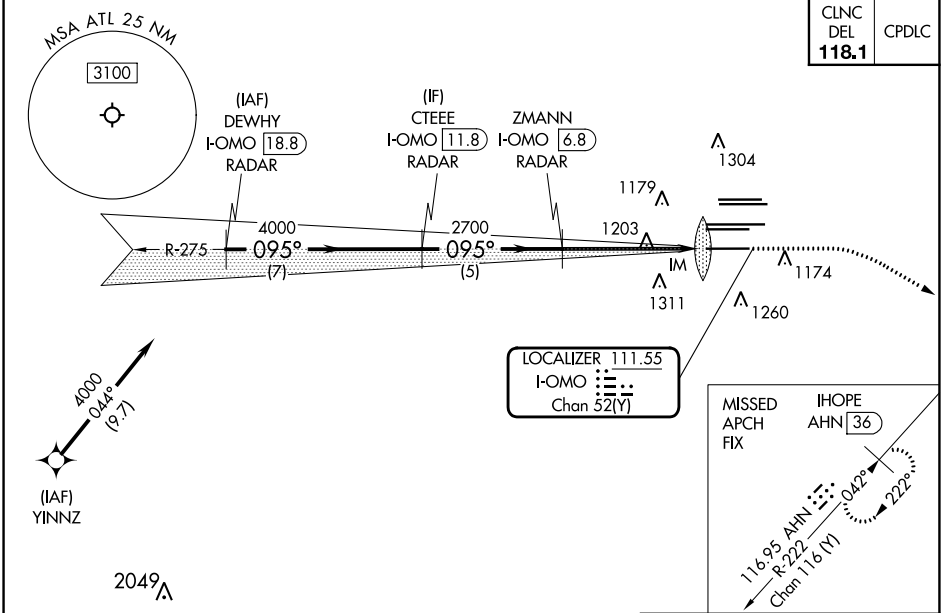
LOC/DME I-OMO <b>111.55</b> Chan <b>52 (Y)</b>	APP CRS <b>095°</b>	Rwy ldg <b>9000</b> TDZE <b>1000</b> Apt Elev <b>1026</b>
--	------------------------	--

# ILS RWY 10 (CAT II & III)

HARTSFIELD-JACKSON ATLANTA INTL (ATL)

DME or RADAR required. RNP APCH - GPS from YNNZ.		ALSF-2 	MISSED APPROACH: Climb to 1400 then climbing right turn to 3000 on heading 120° and AHN R-222 to IHOPE/AHN 36 DME and hold.
Simultaneous approach authorized with Rwy 9L or 8R or 8L, or Rwy 9L and 8L.			

D-ATIS ARR <b>119.65</b>	ATLANTA APP CON <b>127.9 379.9</b>	ATLANTA TOWER 8L-26R 8R-26L 9L-27R 9R-27L 10-28 RWYS <b>119.1 125.325 123.85 119.3 119.5 254.4</b>				ALL RWYS <b>254.4</b>	GND CON (8L-26R,8R-26L) (9L-27R,9R-27L) 10-28 RWYS <b>121.9 121.75 121.65 254.4</b>
-----------------------------	--	--	--	--	--	-----------------------------	---

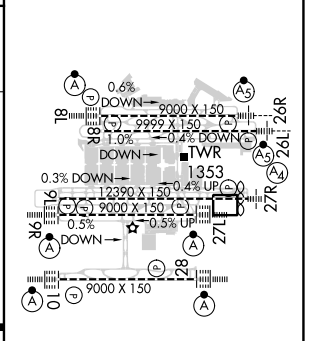
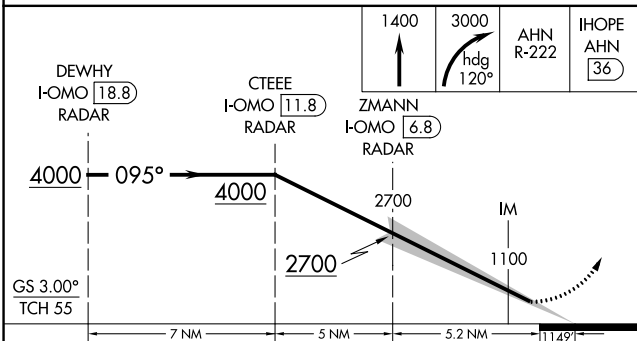


CLNC DEL <b>118.1</b>	CPDLC
-----------------------------	-------

SE-4, 03 OCT 2024 to 31 OCT 2024

SE-4, 03 OCT 2024 to 31 OCT 2024

ELEV	1026	<b>D</b>	TDZE	1000
------	------	----------	------	------



CATEGORY	A	B	C	D
S-ILS 10	CAT II RA 110/12 100 DA 1100			
S-ILS 10	CAT III RVR 07			

## CATEGORY II & III ILS - SPECIAL AIRCREW & AIRCRAFT CERTIFICATION REQUIRED

HIRL all Rwy  
TDZ/CL Rwy 8L,  
9R, 10, 26R, 27L and 28