

WAAS CH 61000 W26B	APP CRS 275°	Rwy Idg TDZE 990 Apt Elev 1026
--	------------------------	--

RNAV (GPS) Y RWY 26R

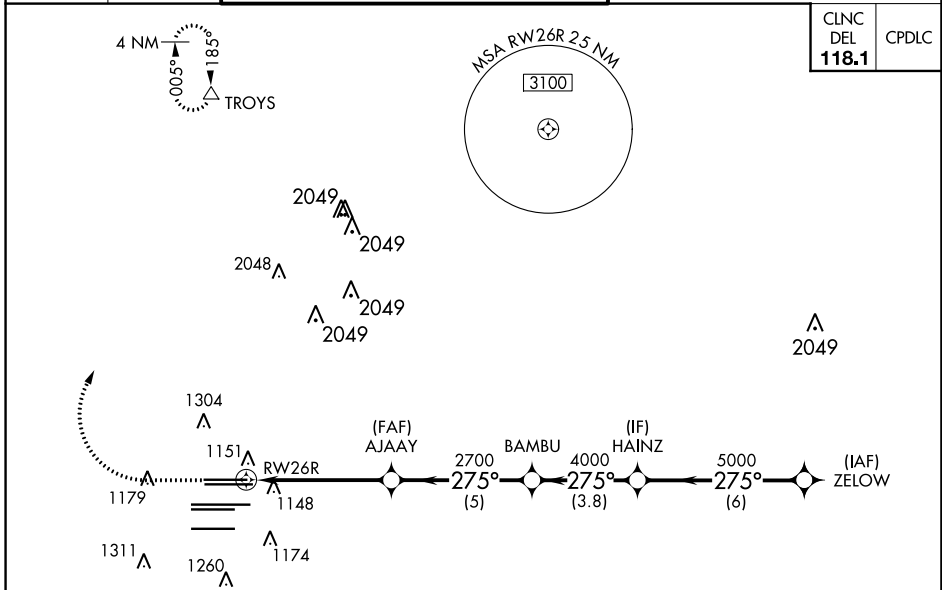
HARTSFIELD-JACKSON ATLANTA INTL (ATL)

▽ For uncompensated Baro-VNAV systems, LNAV/VNAV NA below -7°C (20°F) or above 54°C (130°F). DME/DME RNP-0.3 NA. Simultaneous approach authorized with Rwy 27R or 27L or 28, or Rwys 27R and 28. LNAV procedure NA during simultaneous operations. Use of FD or AP providing RNAV track guidance required during simultaneous operations.



MISSED APPROACH:
Climb to 1500 then climbing right turn to 3500 direct TROYS and hold.

D-ATIS ARR 119.65	ATLANTA APP CON 127.9 379.9	ATLANTA TOWER 8L-26R 8R-26L 9L-27R 9R-27L 10-28 RWYS				ALL RWYS	GND CON (8L-26R,8R-26L) (9L-27R,9R-27L) 10-28	ALL RWYS			
DEP 125.55	127.9 379.9	119.1	125.325	123.85	119.3	119.5	254.4	121.9	121.75	121.65	254.4



SE-4, 03 OCT 2024 to 31 OCT 2024

SE-4, 03 OCT 2024 to 31 OCT 2024

ELEV 1026	D	TDZE 990
-----------	----------	----------

RADAR REQUIRED

HIRL all Rwys
TDZ/CL Rwys 8L, 9R, 10, 26R,
27L and 28

1500	3500	TROYS	△	VGSi and RNAV glidepath not coincident (VGSi Angle 3.00/TCH 69).
*LNAV only.		AJAAY	BAMBU	HAINZ
*1.3 NM to RWY 26R		2700	4000	5000
RWY 26R		2700	5000	GP 3.00° TCH 55
1.3		3.9 NM	5 NM	3.8 NM
6 NM				
CATEGORY	A	B	C	D
LPV DA	1190/18		200 (200-½)	
LNAV/VNAV DA	1426/50		436 (500-1)	
LNAV MDA	1460/24		470 (500-½)	
			1460/50 470 (500-1)	