

LOC I-CEC 108.7	APP CRS 119°	Rwy Idg TDZE Apt Elev	5002 60 61
---------------------------	------------------------	-----------------------------	---------------------------------------

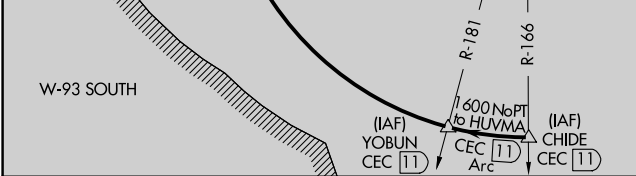
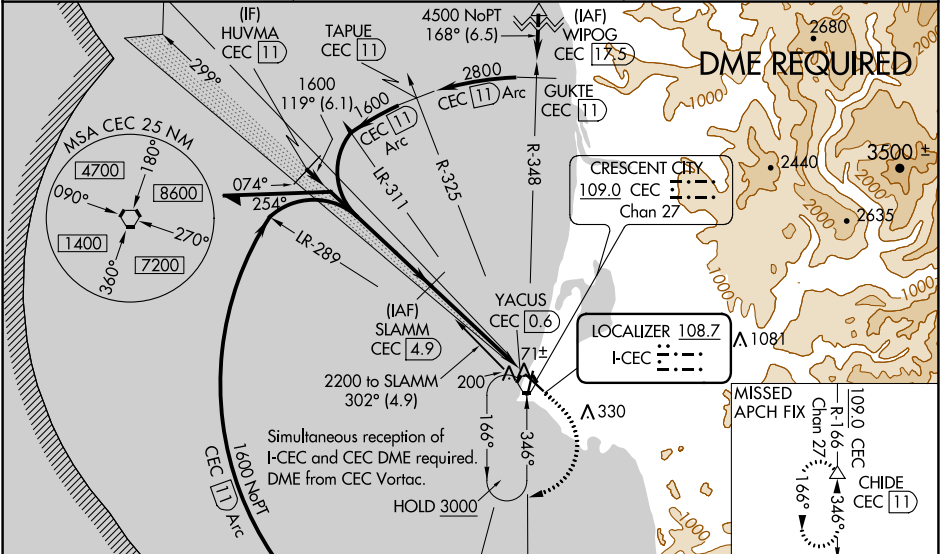
ILS or LOC RWY 12

JACK MC NAMARA FLD (CEC)

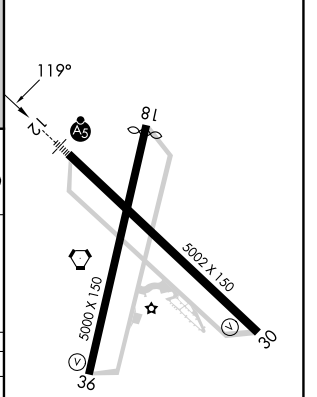
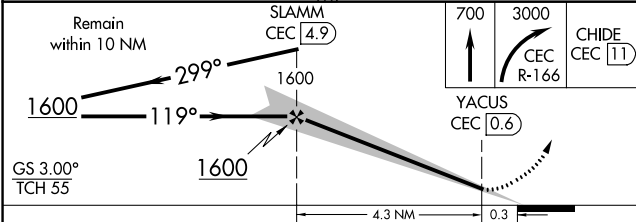
NA DME required. S-ILS 12: ½ mile visibility authorized with use of FD or AP or HUD to DA. Inop table does not apply to S-ILS 12, except with use of FD or AP or HUD to DA. For inop MALS, increase S-LOC 12 all Cats visibility ¼ mile. When local altimeter setting not received, use Brookings altimeter setting and increase DA to 407 feet and all MDA 100 feet; increase S-LOC 12 Cat C/D, and Circling Cat D visibilities ¼ mile. For inop MALS, when using Brookings altimeter setting, increase S-ILS 12 all Cats visibility to 1 mile. Night Landing: Rwy 36 operational VGSi required, remain on or above VGSi glidepath until threshold. Circling to Rwy 18, 30 NA at night.

MALS
MISSED APPROACH:
Climb to 700 then climbing right turn to 3000 on CEC VORTAC R-166 to CHIDE/CEC 11 DME and hold, continue climb-in-hold to 3000.

ASOS 119.925	SEATTLE CENTER 124.85 306.3	UNICOM 122.8 (CTAF)
------------------------	---------------------------------------	-------------------------------



ELEV 61	D	TDZE 60
---------	----------	---------



CATEGORY	A	B	C	D
S-ILS 12		310-¾	250 (300-¾)	
S-LOC 12		380-¾	320 (400-¾)	
C CIRCLING	540-1	479 (500-1)	640-1½ 579 (600-1½)	640-2 579 (600-2)

HIRL Rwy 12-30
REIL Rwy 18, 30 and 36
MIRL Rwy 18-36

SW-2, 03 OCT 2024 to 31 OCT 2024

SW-2, 03 OCT 2024 to 31 OCT 2024