

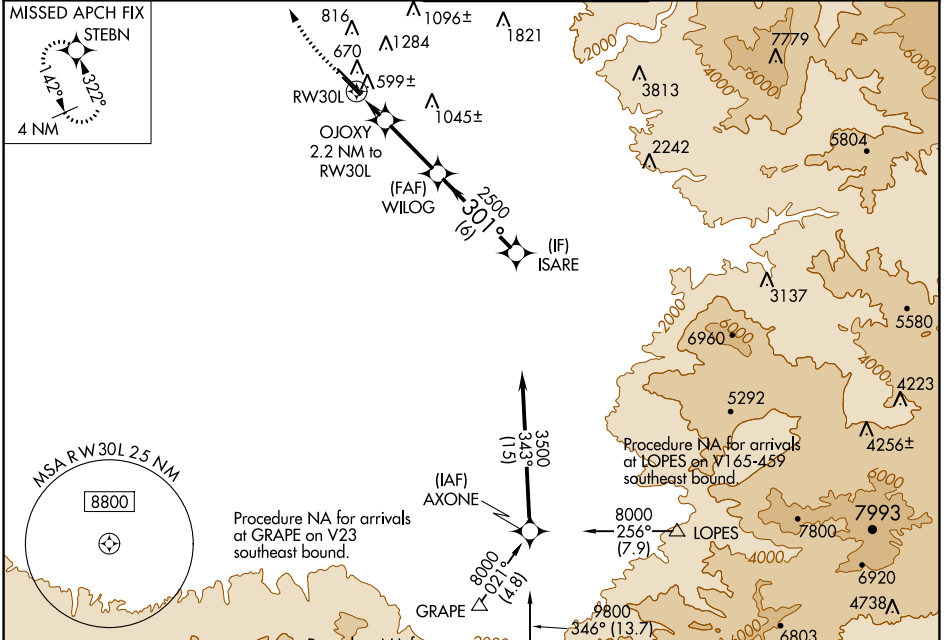
WAAS CH <b>82440</b> <b>W30B</b>	APP CRS <b>301°</b>	Rwy ldg TDZE <b>484</b> Apt Elev <b>510</b>
--	------------------------	--

# RNAV (GPS) RWY 30L

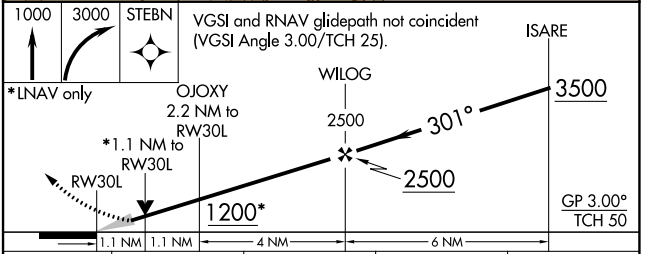
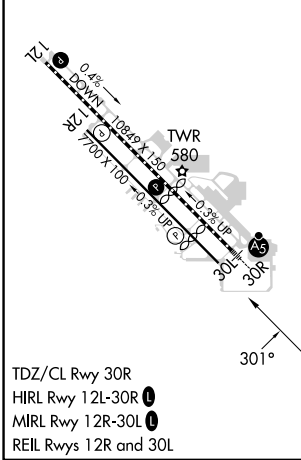
MEADOWS FLD (BFL)

For uncompensated Baro-VNAV systems, LNAV/VNAV NA below -1°C (31°F) or above 54°C (130°F). Circling NA northeast of Rwy 12L-30R.  
 MISSED APPROACH: Climb to 1000 then climbing right turn to 3000 direct STEBN and hold.

ATIS <b>118.6</b>	BAKERSFIELD APP CON ★ <b>118.8 284.625</b> (SOUTH) <b>118.9 270.3</b> (NORTH)	BAKERSFIELD TOWER ★ <b>118.1</b> (CTAF) <b>257.8</b>	GND CON <b>121.7</b>	UNICOM <b>122.95</b>
----------------------	--	---	-------------------------	-------------------------



ELEV <b>510</b>	<b>D</b>	TDZE <b>484</b>	Procedure NA for arrival at GMN VORTAC on V328 radials 297 CW 328.
-----------------	----------	-----------------	--



CATEGORY	A	B	C	D
LPV DA		734-7/8	250 (300-7/8)	
LNAV/VNAV DA		797-1/8	313 (300-1/8)	
LNAV MDA		860-1	376 (400-1)	
<b>C</b> CIRCLING	960-1	450 (500-1)	960-1/2 450 (500-1/2)	1060-2 550 (600-2)

SW-3, 03 OCT 2024 to 31 OCT 2024

SW-3, 03 OCT 2024 to 31 OCT 2024