

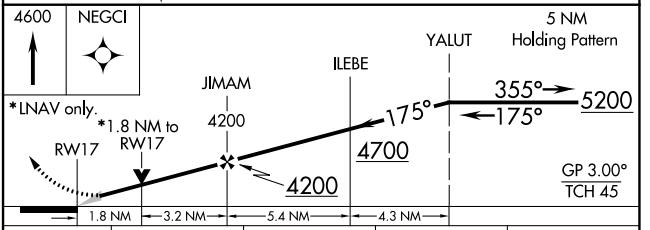
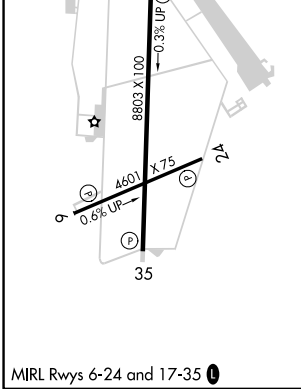
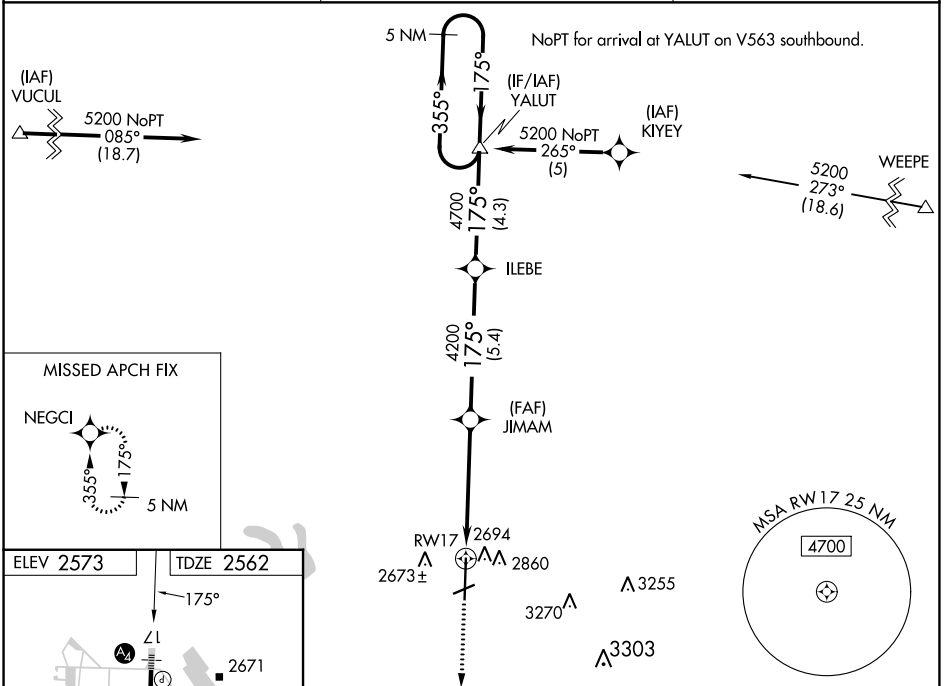
WAAS CH 97618 W17A	APP CRS 175°	Rwy Idg TDZE Apt Elev	8803 2562 2573
--	------------------------	-----------------------------	---

RNAV (GPS) RWY 17

BIG SPRING McMAHON-WRINKLE (BPG)

RNP APCH.	SSALS 	MISSED APPROACH: Climb to 4600 direct NEGCI and hold.
<p>⚠ Inop table does not apply to LNAV/VNAV and LNAV Cat C. When local altimeter setting not received, use Midland Intl Air and Space Port altimeter setting: increase all DA 130 feet and all MDA 140 feet; increase LPV and LNAV/VNAV all Cats and LNAV Cat C and D visibility ½ SM. Baro-VNAV NA when using Midland Intl Air and Space Port altimeter setting. VDP NA with Midland Intl Air and Space Port altimeter setting. For uncompensated Baro-VNAV systems, LNAV/VNAV NA below -20°C or above 43°C.</p>		

AWOS-3PT 118.025	FORT WORTH CENTER 133.7 350.2	UNICOM 122.8 (CTAF)
----------------------------	---	-------------------------------



CATEGORY	A	B	C	D
LPV DA	2812-1 250 (300-1)			
LNAV/VNAV DA	3040-1¼ 478 (500-1¼)			
LNAV MDA	3160-¾ 598 (600-¾)	3160-1½ 598 (600-1½)	3160-1¾ 598 (600-1¾)	3160-1¾ 598 (600-1¾)

SC-2, 03 OCT 2024 to 31 OCT 2024

SC-2, 03 OCT 2024 to 31 OCT 2024