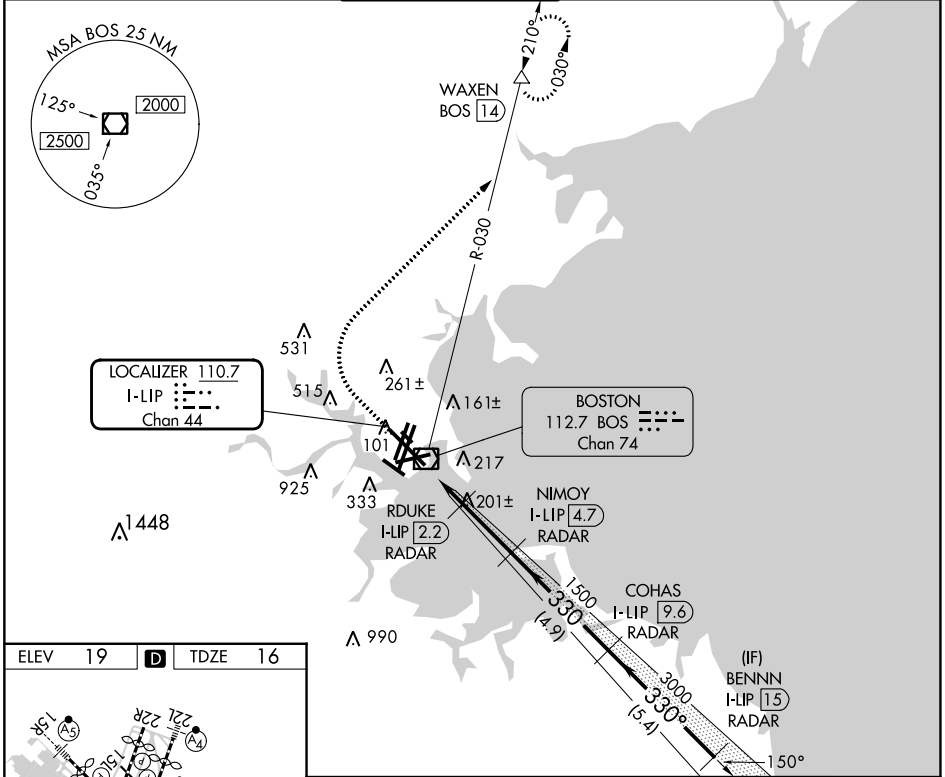


LOC/DME I-LIP 110.7 Chan 44	APP CRS 330°	Rwy Idg 10083 TDZE 16 Apt Elev 19
---	------------------------	--

ILS or LOC RWY 33L

GENERAL EDWARD LAWRENCE LOGAN INTL (BOS)

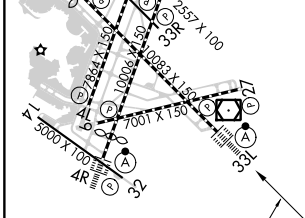
RADAR required for procedure entry. DME required.		ALSIF-2 	MISSED APPROACH: Climb to 1500 then climbing right turn to 3000 on BOS VOR/DME R-030 to WAXEN/BOS 14 DME and hold.		
D-ATIS 135.0	BOSTON APP CON 120.6 263.1	BOSTON TOWER 128.8 257.8 (WEST) 132.225 257.8 (EAST)	GND CON 121.75 121.9	CLNC DEL 121.65 257.8	CPDLC



NE-1, 03 OCT 2024 to 31 OCT 2024

NE-1, 03 OCT 2024 to 31 OCT 2024

ELEV 19	D	TDZE 16
---------	----------	---------



TDZ/CL Rws 4R, 15R and 33L
REIL Rws 4L, 27 and 32
MIRL Rwy 15L-33R
HIRL Rws 4L-22R, 4R-22L, 9-27, 14-32 and 15R-33L

FAF to MAP 4.5 NM

Knots	60	90	120	150	180
Min:Sec	4:30	3:00	2:15	1:48	1:30

1500	3000	WAXEN	VGSI and ILS glidepath not coincident (VGSI Angle 3.00/TCH 68).		
			BENNN I-LIP 15 RADAR	4000	GS 3.00° TCH 57
			NIMOY I-LIP 4.7 RADAR	1500	
			RDUKE I-LIP 2.2 RADAR	700	
			COHAS I-LIP 9.6 RADAR	1500	
			I-LIP 0.2		
			I-LIP 1.4		
			I-LIP 1500		
			330°		
			3000		
			1.2 NM	0.8 NM	2.5 NM
			4.9 NM	5.4 NM	
CATEGORY	A	B	C	D	
S-ILS 33L	216/18 200 (200-½)				
S-LOC 33L	460/24 444 (500-½)		460/45 444 (500-¾)		