

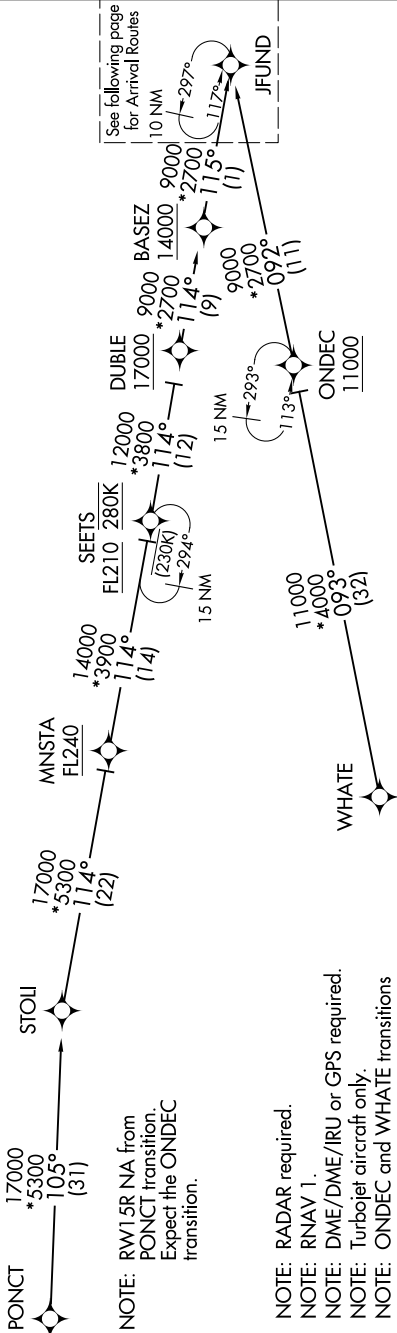
JFUND TWO ARRIVAL(RNAV) Transition Routes

AL-58 (FAA)

BOSTON, MASSACHUSETTS

NE-1, 03 OCT 2024 to 31 OCT 2024

D-ATIS  
135.0  
BOSTON APP CON  
120.6 263.1



See following page for Arrival Routes

NOTE: RW15R NA from PUNCT transition. Expect the ONDEC transition.

- NOTE: RADAR required.
- NOTE: RNAV 1.
- NOTE: DME/DME/IRU or GPS required.
- NOTE: Turbojet aircraft only.
- NOTE: ONDEC and WHATE transitions assigned by ATC only.



ONDEC TRANSITION [ONDEC.JFUND2]:  
 PUNCT TRANSITION [PUNCT.JFUND2]:  
 WHATE TRANSITION [WHATE.JFUND2]:

NOTE: Not to scale. (CONTINUED ON FOLLOWING PAGE)

NE-1, 03 OCT 2024 to 31 OCT 2024

JFUND TWO ARRIVAL(RNAV) Transition Routes

BOSTON, MASSACHUSETTS