

LOC I-BRL 108.9	APP CRS 359°	Rwy Idg TDZE Apt Elev	6102 694 698
---------------------------	------------------------	-----------------------------	---

ILS or LOC RWY 36

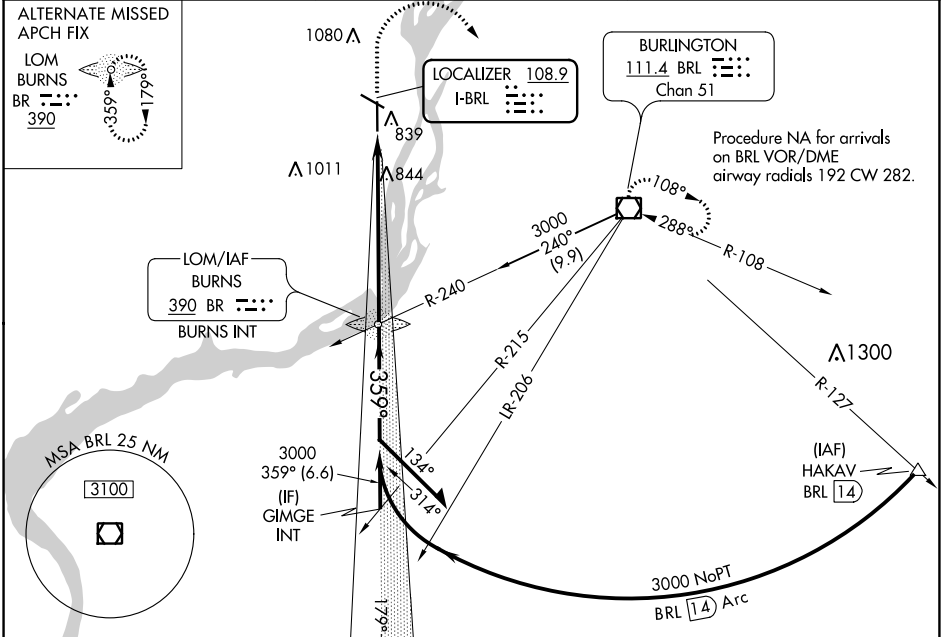
SOUTHEAST IOWA RGNL (B.R.L)

NA

MALSR

MISSED APPROACH: Climb to 2800 then climbing right turn to 3000 direct BRL VOR/DME and hold.

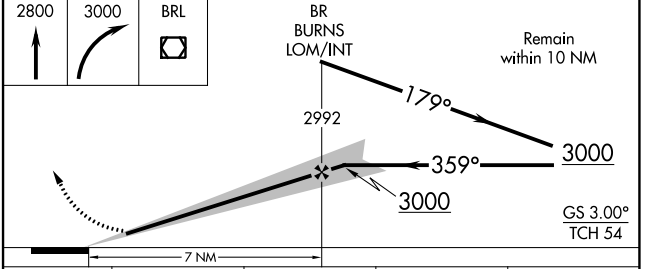
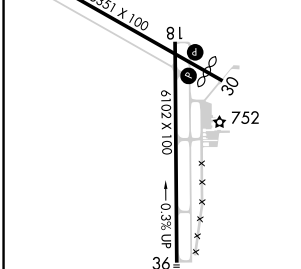
ASOS 118.025	CHICAGO CENTER 135.6 370.95	UNICOM 123.0 (CTAF)
------------------------	---------------------------------------	-------------------------------



NC-3, 03 OCT 2024 to 31 OCT 2024

NC-3, 03 OCT 2024 to 31 OCT 2024

ELEV 698	D TDZE 694
REIL Rwy 12, 18 and 30	
MIRL Rwy 12-30	
HIRL Rwy 18-36	



FAF to MAP 7 NM	Category	A	B	C	D
	S-ILS 36	894-1/2 200 (200-1/2)			
	S-LOC 36	1140-1/2 446 (500-1/2)	1140-7/8 446 (500-7/8)	1140-1 446 (500-1)	1140-1 446 (500-1)
<input checked="" type="checkbox"/> CIRCLING		1180-1 482 (500-1)	1380-2 682 (700-2)	1380-2 1/4 682 (700-2 1/4)	1380-2 1/4 682 (700-2 1/4)